

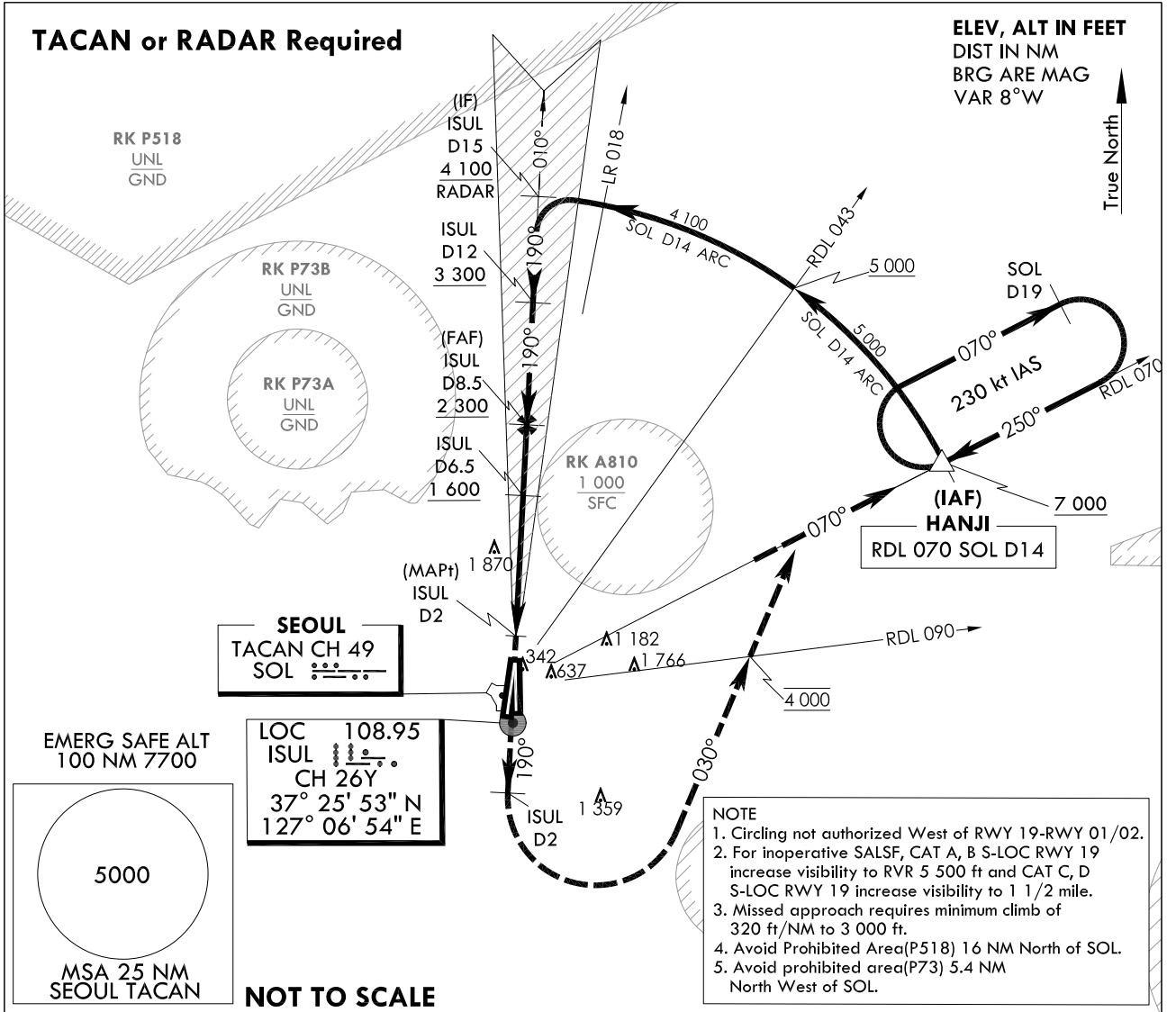
**INSTRUMENT
APPROACH
CHART**

AERODROME ELEV 93 ft
HEIGHTS RELATED TO
THR RWY 19 - ELEV 68 ft

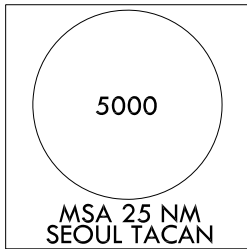
SEOUL APP 123.8 363.8
SEOUL TWR 126.2
234.5 236.6

SEOUL/Seoul(RKSM)
LOC/DME Z
RWY 19

Note : Approach and Circle to land under U.S. TERPS.



EMERG SAFE ALT
100 NM 7700

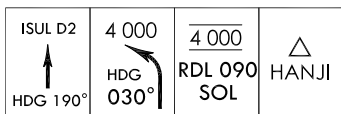


LOC 108.95
ISUL 108.95
CH 26Y
37° 25' 53" N
127° 06' 54" E

NOT TO SCALE

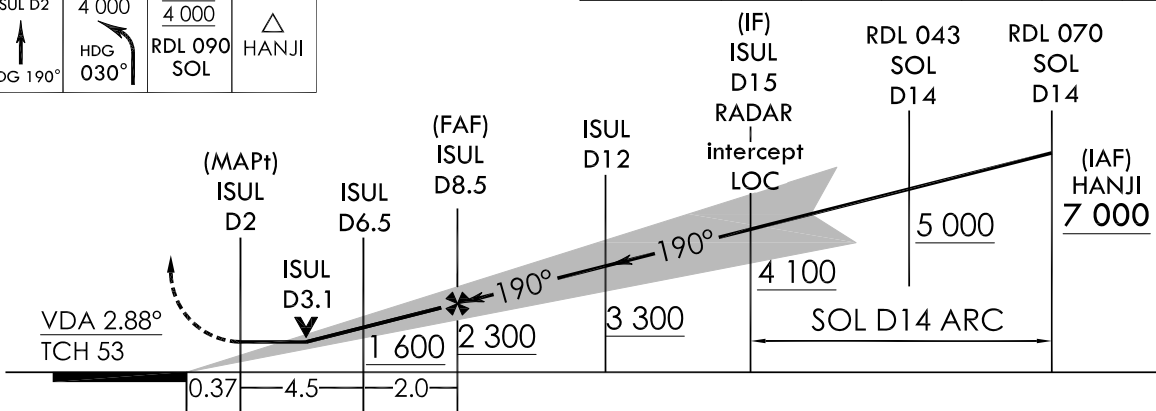
- NOTE**
1. Circling not authorized West of RWY 19-RWY 01/02.
 2. For inoperative SALSF, CAT A, B S-LOC RWY 19 increase visibility to RVR 5 500 ft and CAT C, D S-LOC RWY 19 increase visibility to 1 1/2 mile.
 3. Missed approach requires minimum climb of 320 ft/NM to 3 000 ft.
 4. Avoid Prohibited Area(P518) 16 NM North of SOL.
 5. Avoid prohibited area(P73) 5.4 NM North West of SOL.

TRANSITION ALT 14 000
TRANSITION LVL FL 140



Missed Approach Climb Rate table

KNOTS	60	120	180	240	300	TO
V/V(fpm)	320	640	960	1 280	1 590	3 000



CATEGORY	A	B	C	D	E
S-LOC RWY 19	600 / 40 528 (600 - 3/4)		600 - 1/4 528 (600 - 1/4)		N/A
Circling	1 020 - 1/4 927(1 000-1/4)		1 560 - 3 1 467(1 500-3)	2 260 - 3 2 167(2 200-3)	N/A

MISSED APPROACH

Climb HDG 190° to ISUL 2DME and climbing left turn HDG 030° to cross RDL 090 SOL at 4 000 ft, then RDL 070 SOL to HANJI and hold, continue climb-in-holding to 7 000 ft.

Change : New procedure.

INTENTIONALLY

LEFT

BLANK

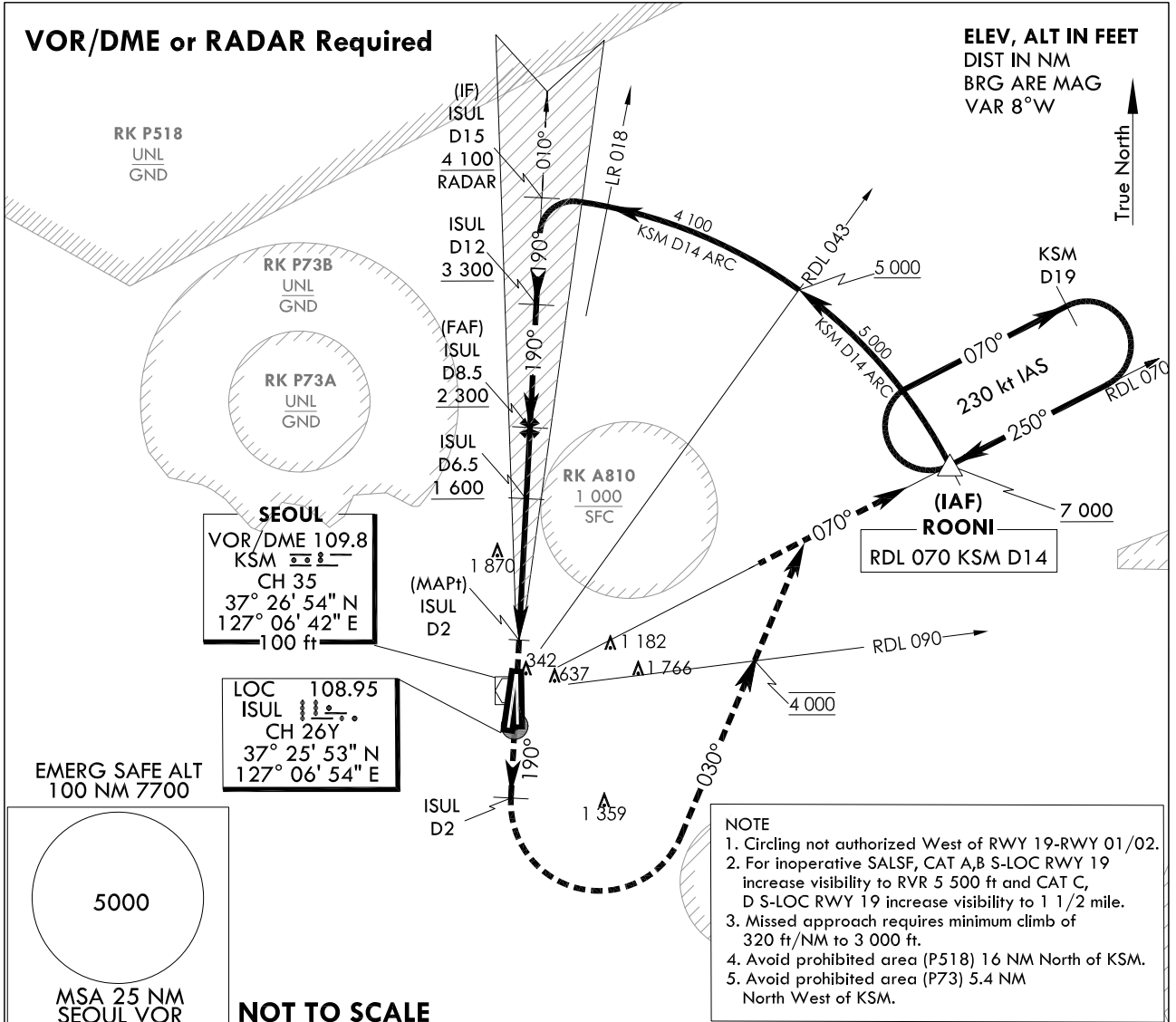
**INSTRUMENT
APPROACH
CHART**

AERODROME ELEV 93 ft
HEIGHTS RELATED TO
THR RWY 19 - ELEV **68 ft**

SEOUL APP 123.8 363.8
SEOUL TWR 126.2
234.5 236.6

SEOUL/Seoul(RKSM)
LOC/DME Y
RWY 19

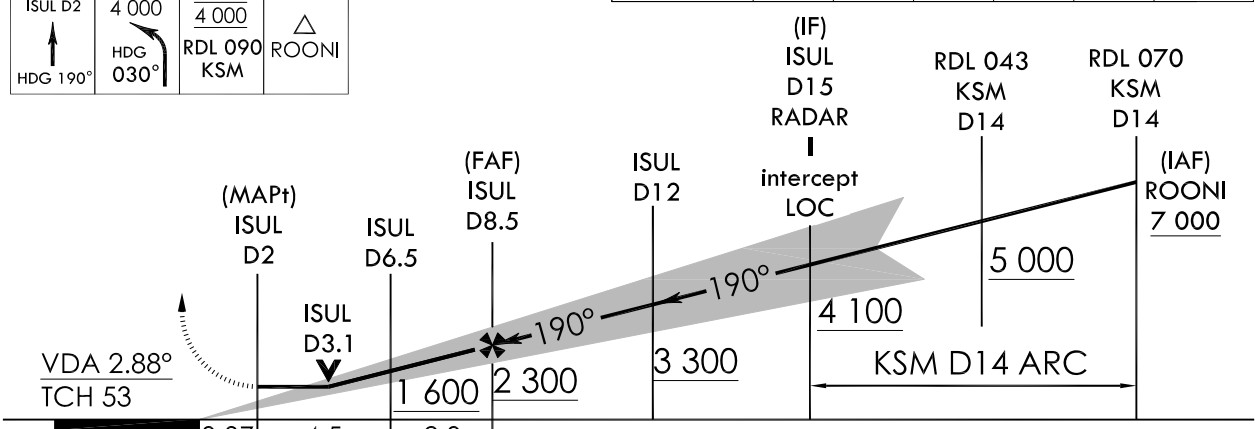
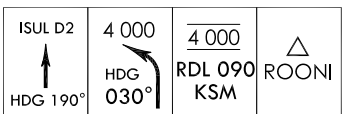
Note : Approach and Circle to land under U.S. TERPS.



TRANSITION ALT 14 000
TRANSITION LVL FL 140

Missed Approach Climb Rate table

KNOTS	60	120	180	240	300	TO
V/V(fpm)	320	640	960	1 280	1 590	3 000



CATEGORY	A	B	C	D	E
S-LOC RWY 19	600 / 40 528 (600 - 3/4)		600 - 1/4	528 (600 - 1/4)	N/A
Circling	1 020 - 1 1/4 927(1 000-1 1/4)		1 560 - 3 1 467(1 500-3)	2 260 - 3 2 167(2 200-3)	N/A

MISSED APPROACH
Climb HDG 190° to ISUL 2DME and climbing left turn HDG 030° to cross RDL 090 KSM at 4 000 ft, then RDL 070 KSM to ROONI and hold, continue climb-in-holding to 7 000 ft.

Change : Amended phrases.

INTENTIONALLY

LEFT

BLANK

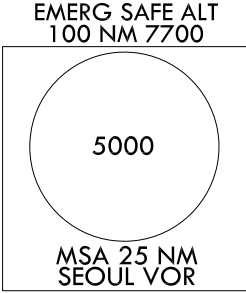
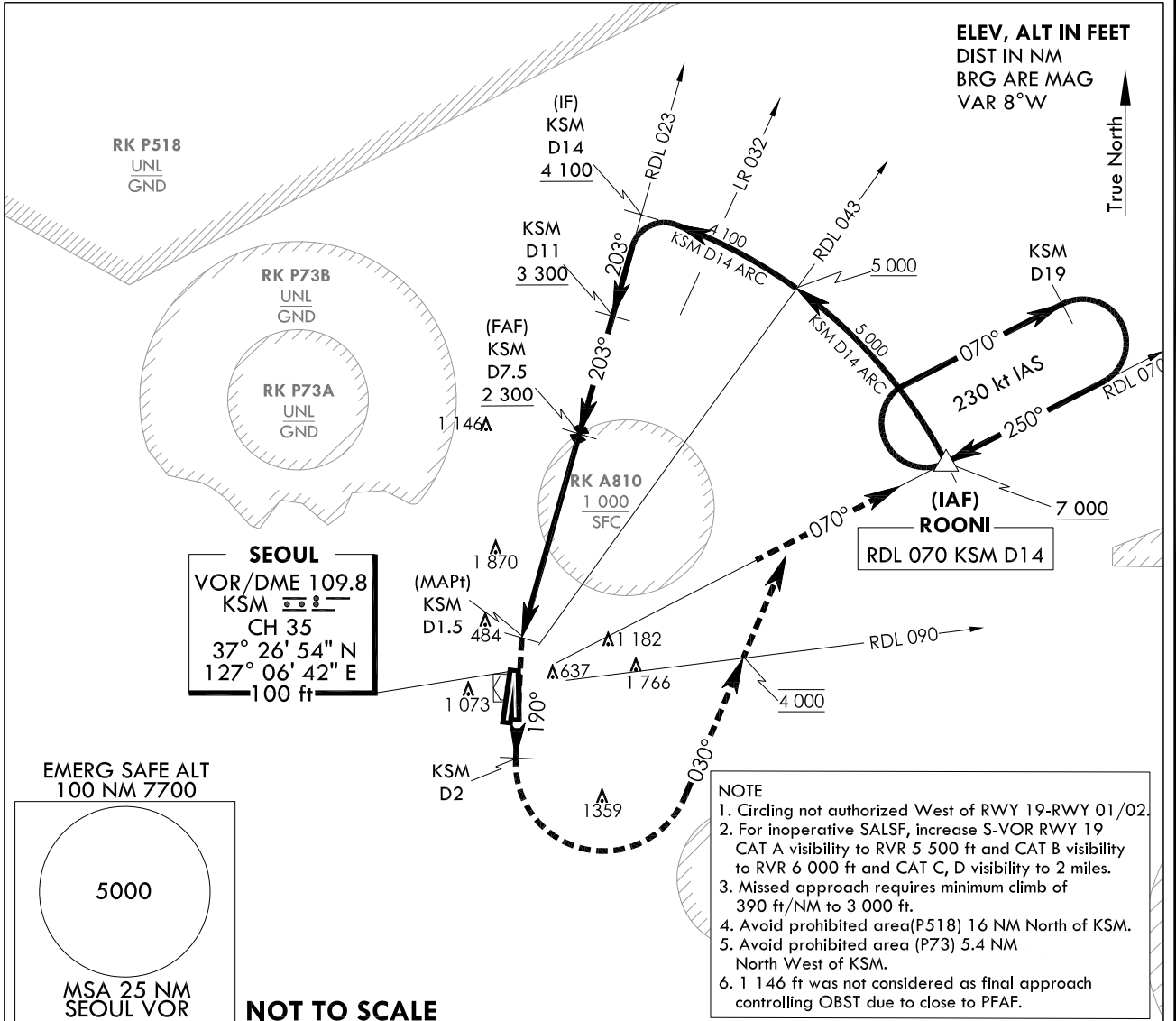
**INSTRUMENT
APPROACH
CHART**

AERODROME ELEV 93 ft
HEIGHTS RELATED TO
THR RWY 19 - ELEV 68 ft

SEOUL APP 123.8 363.8
SEOUL TWR 126.2
234.5 236.6

SEOUL/Seoul(RKSM)
VOR/DME
RWY 19

Note : Approach and Circle to land under U.S. TERPS.

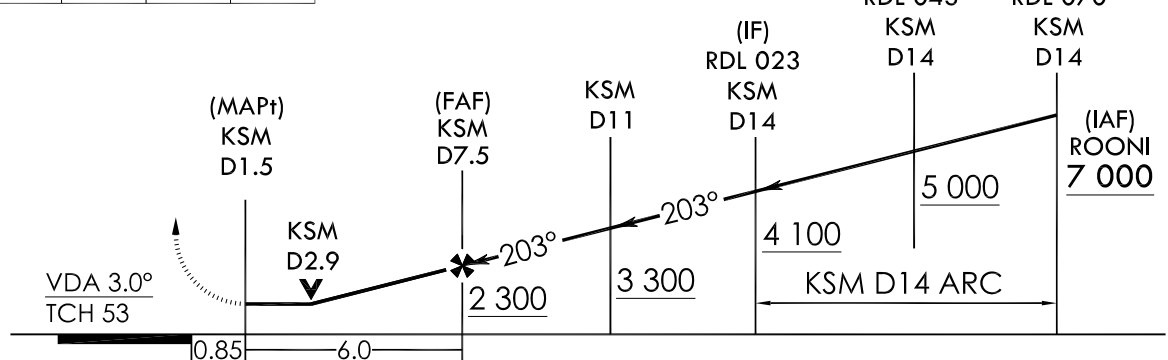
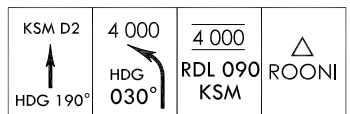


NOT TO SCALE

TRANSITION ALT 14 000
TRANSITION LVL FL 140

Missed Approach Climb Rate table

KNOTS	60	120	180	240	300	TO
V/V(fpm)	390	770	1 150	1 530	1 910	3 000



CATEGORY	A	B	C	D	E
S-VOR RWY 19	820 / 40 748 (800 - 3/4)	820 / 55 748 (800 - 1)	820 - 1 7/8 748 (800 - 1 7/8)		N/A
Circling	1 020 - 1 1/4 927(1 000-1 1/4)		1 560 - 3 1 467(1 500-3)	2 260 - 3 2 167(2 200-3)	N/A

MISSED APPROACH
Climb HDG 190° to KSM 2DME and climbing left turn HDG 030° to cross RDL 090 KSM at 4 000 ft, then RDL 070 KSM to ROONI and hold, continue climb-in-holding to 7 000 ft.

Change : New procedure.

INTENTIONALLY

LEFT

BLANK

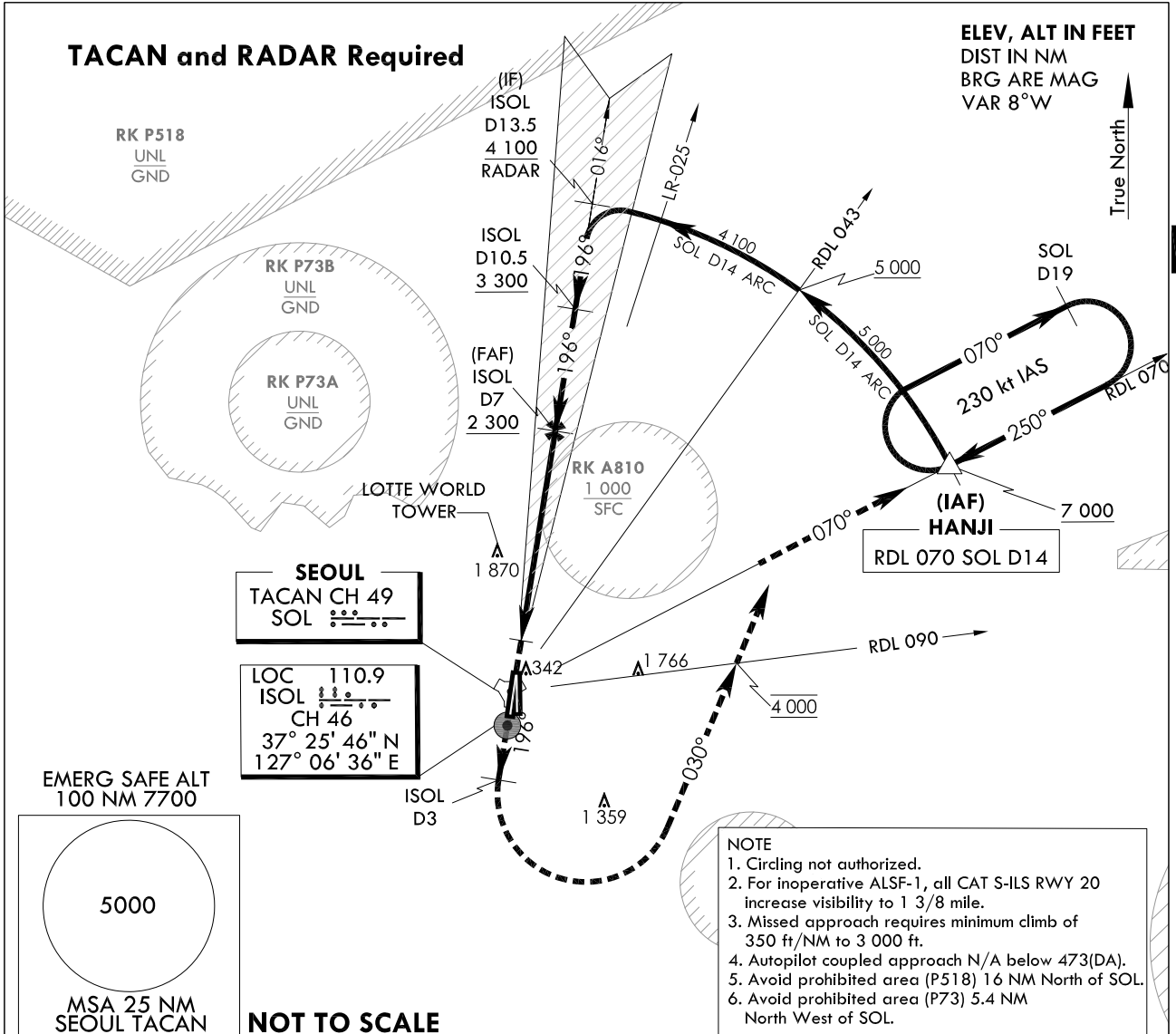
**INSTRUMENT
APPROACH
CHART**

AERODROME ELEV 93 ft
HEIGHTS RELATED TO
THR RWY 20 - ELEV 68 ft
HIGHEST ELEV TDZ 69 ft

SEOUL APP 123.8 363.8
SEOUL TWR 126.2
234.5 236.6

SEOUL/Seoul(RKSM)
ILS Z
RWY 20

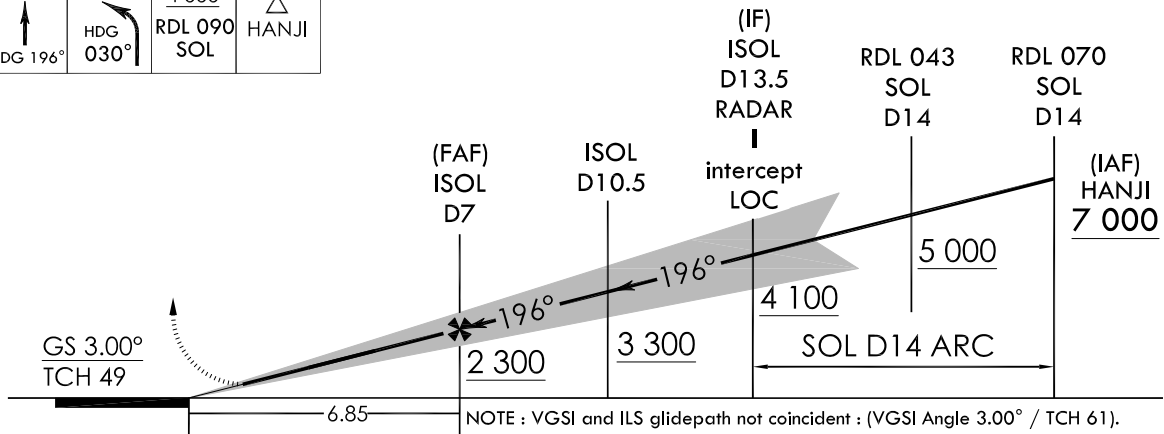
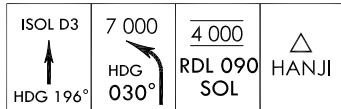
Note : Approach and Circle to land under U.S. TERPS.



TRANSITION ALT 14 000
TRANSITION LVL FL 140

Missed Approach Climb Rate table

KNOTS	60	120	180	240	300	TO
V/V(fpm)	350	700	1 050	1 400	1 750	3 000



NOTE : VGSI and ILS glidepath not coincident : (VGSI Angle 3.00° / TCH 61).

MISSED APPROACH

Climb HDG 196° to ISOL 3DME and climbing left turn HDG 030° to cross RDL 090 SOL at 4 000 ft, then RDL 070 SOL to HANJI and hold, continue climb-in-holding to 7 000 ft.

CATEGORY	A	B	C	D	E
S-ILS RWY 20		473 / 45	404 (400 - 7/8)		N/A

Change : Information of bearing(197°→196°).

INTENTIONALLY

LEFT

BLANK

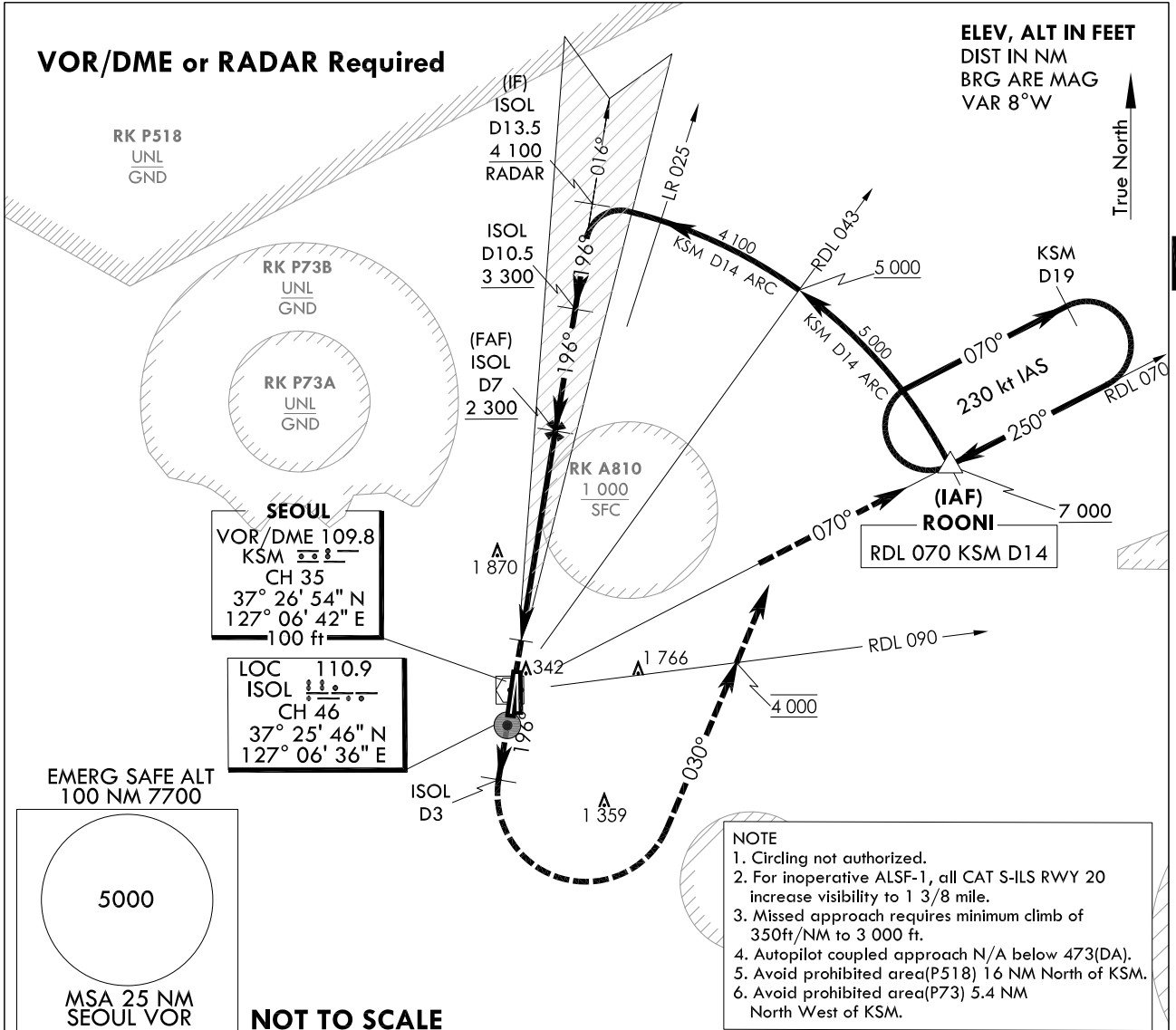
**INSTRUMENT
APPROACH
CHART**

AERODROME ELEV 93 ft
HEIGHTS RELATED TO
THR RWY 20 - ELEV 68 ft
HIGHEST ELEV TDZ 69 ft

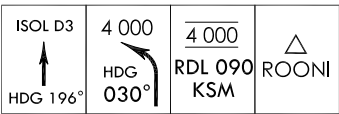
SEOUL APP 123.8 363.8
SEOUL TWR 126.2
234.5 236.6

SEOUL/Seoul(RKSM)
ILS Y
RWY 20

Note : Approach and Circle to land under U.S. TERPS.

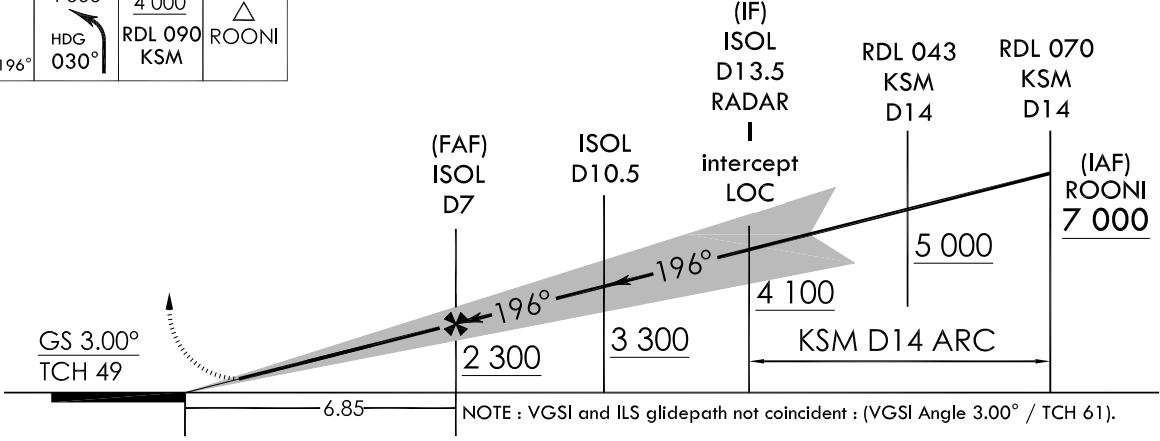


TRANSITION ALT 14 000
TRANSITION LVL FL 140



Missed Approach Climb Rate table

KNOTS	60	120	180	240	300	TO
V/V(fpm)	350	700	1 050	1 400	1 750	3 000



CATEGORY	A	B	C	D	E
S-ILS RWY 20		473 / 45	404 (400 - 7/8)		N/A

MISSED APPROACH
Climb HDG 196° to ISOL 3DME and climbing left turn HDG 030° to cross RDL 090 KSM at 4 000 ft, then RDL 070 KSM to ROONI and hold, continue climb-in-holding to 7 000 ft.

Change : Information of bearing(197°→196°).

INTENTIONALLY

LEFT

BLANK

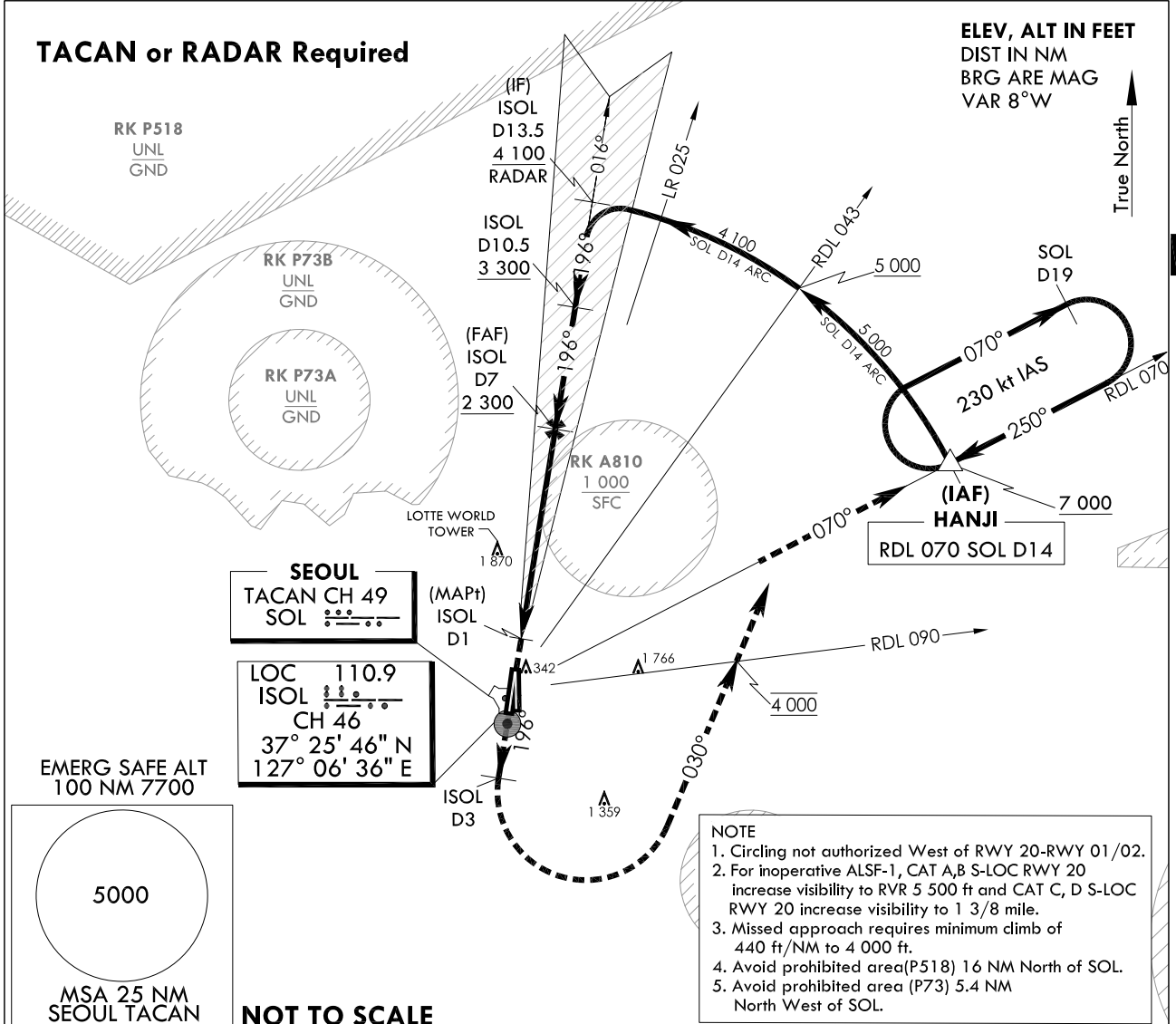
**INSTRUMENT
APPROACH
CHART**

AERODROME ELEV 93 ft
HEIGHTS RELATED TO
THR RWY 20 - ELEV 68 ft
HIGHEST ELEV TDZ 69 ft

SEOUL APP 123.8 363.8
SEOUL TWR 126.2
234.5 236.6

SEOUL/Seoul(RKSM)
LOC/DME Z
RWY 20

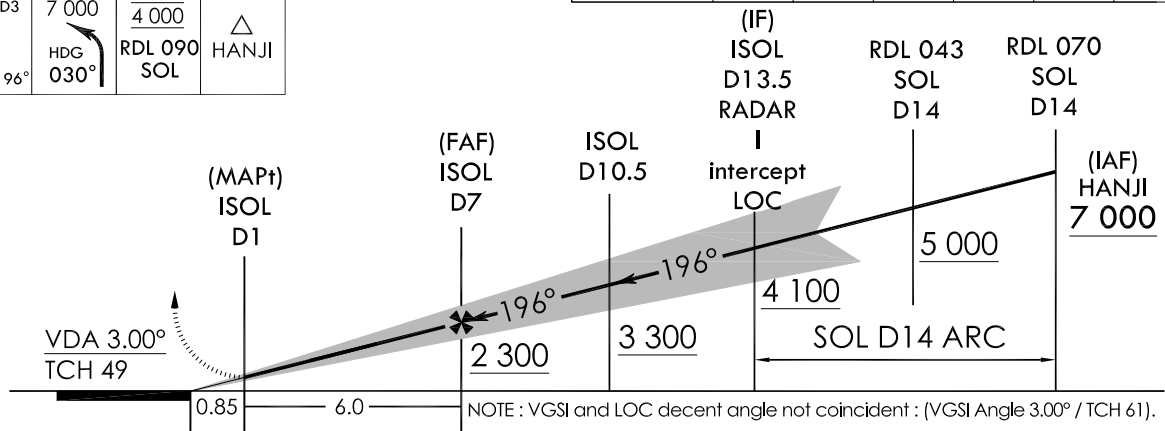
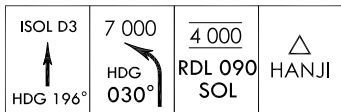
Note : Approach and Circle to land under U.S. TERPS.



TRANSITION ALT 14 000
TRANSITION LVL FL 140

Missed Approach Climb Rate table

KNOTS	60	120	180	240	300	TO
V/V(fpm)	440	880	1 320	1 760	2 200	4 000



CATEGORY	A	B	C	D	E
S-LOC RWY 20	520 / 35 451 (500 - 5/8)		520 - 45 451 (500 - 5/8)		N/A
Circling	1 020 - 1 1/4 927(1 000-1 1/4)		1 560 - 3 1 467(1 500-3)	2 260 - 3 2 167(2 200-3)	N/A

MISSED APPROACH

Climb HDG 196° to ISOL 3DME and climbing left turn HDG 030° to cross RDL 090 SOL at 4 000 ft, then RDL SOL to HANJI and hold, continue climb-in-holding to 7 000 ft.

Change : Information of bearing(197°→196°).

INTENTIONALLY

LEFT

BLANK

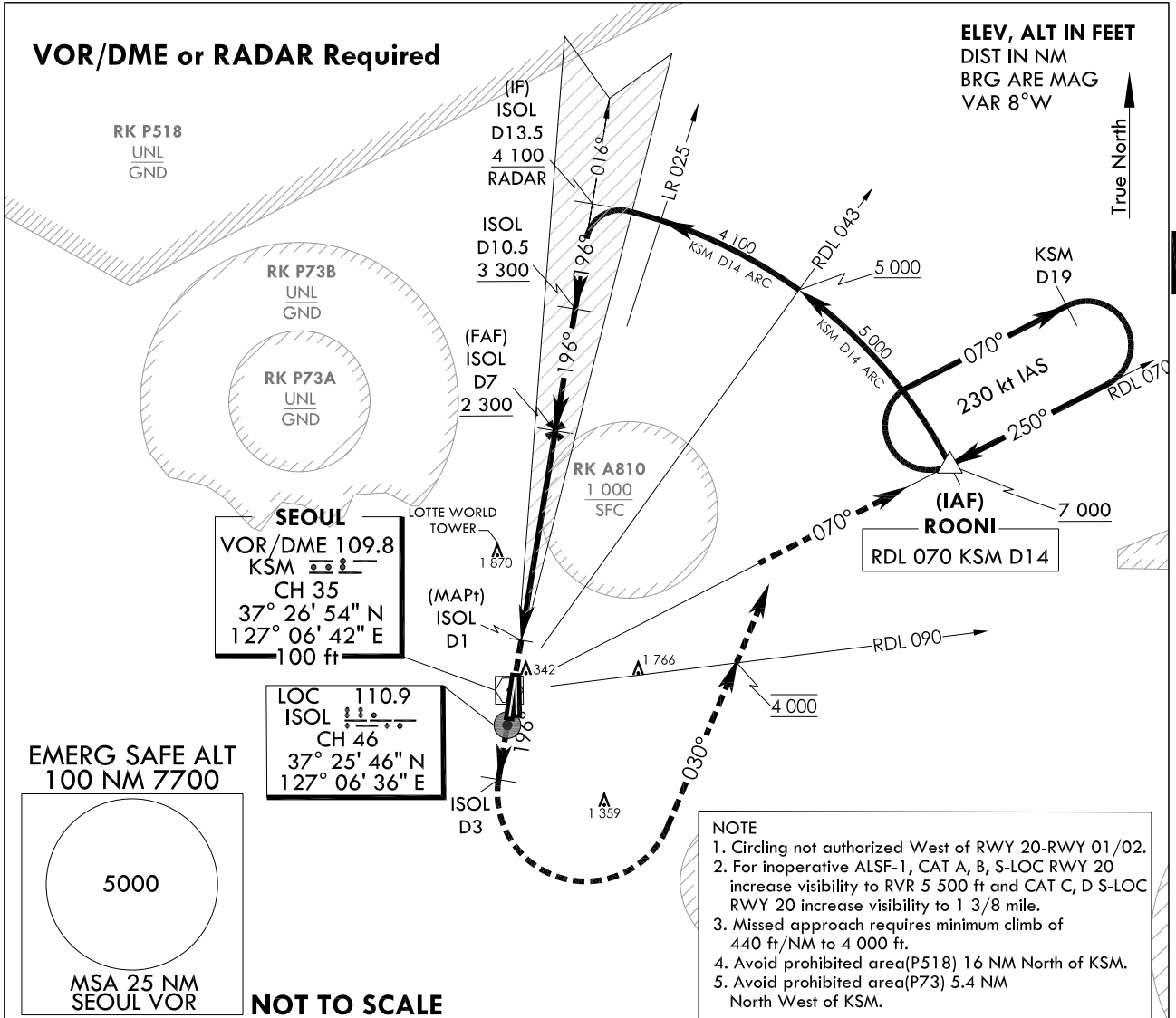
**INSTRUMENT
APPROACH
CHART**

AERODROME ELEV 93 ft
HEIGHTS RELATED TO
THR RWY 20 - ELEV 68 ft
HIGHEST ELEV TDZ 69 ft

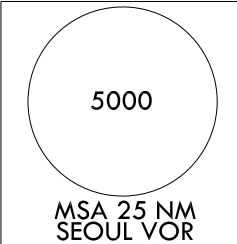
SEOUL APP 123.8 363.8
SEOUL TWR 126.2
234.5 236.6

SEOUL/Seoul(RKSM)
LOC/DME Y
RWY 20

Note : Approach and Circle to land under U.S. TERPS.



EMERG SAFE ALT
100 NM 7700

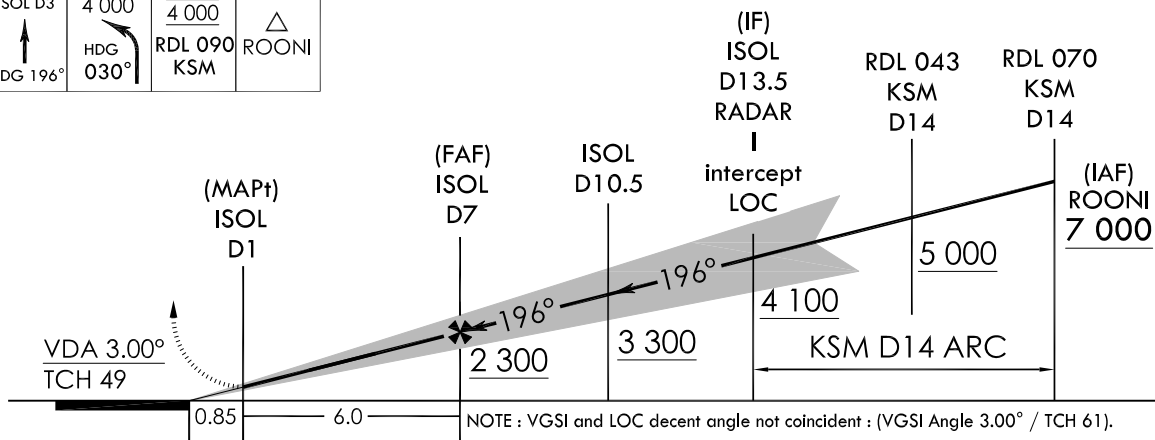
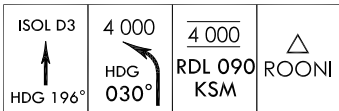


NOT TO SCALE

TRANSITION ALT 14 000
TRANSITION LVL FL 140

Missed Approach Climb Rate table

KNOTS	60	120	180	240	300	TO
V/V(fpm)	440	880	1 320	1 760	2 200	4 000



NOTE : VGSI and LOC decent angle not coincident : (VGSI Angle 3.00° / TCH 61).

CATEGORY	A	B	C	D	E
S-LOC RWY 20	520 / 35 451 (500 - 5/8)		520 - 45 451 (500 - 7/8)		N/A
Circling	1 020 - 1 1/4 927 (1 000 - 1 1/4)		1 560 - 3 1 467 (1 500 - 3)	2 260 - 3 2 167 (2 200 - 3)	N/A

MISSED APPROACH

Climb HDG 196° to ISOL 3DME and climbing left turn HDG 030° to cross RDL 090 KSM at 4 000 ft, then RDL KSM to ROONI and hold, continue climb-in-holding to 7 000 ft.

Change : Information of bearing(197°→196°).

INTENTIONALLY

LEFT

BLANK

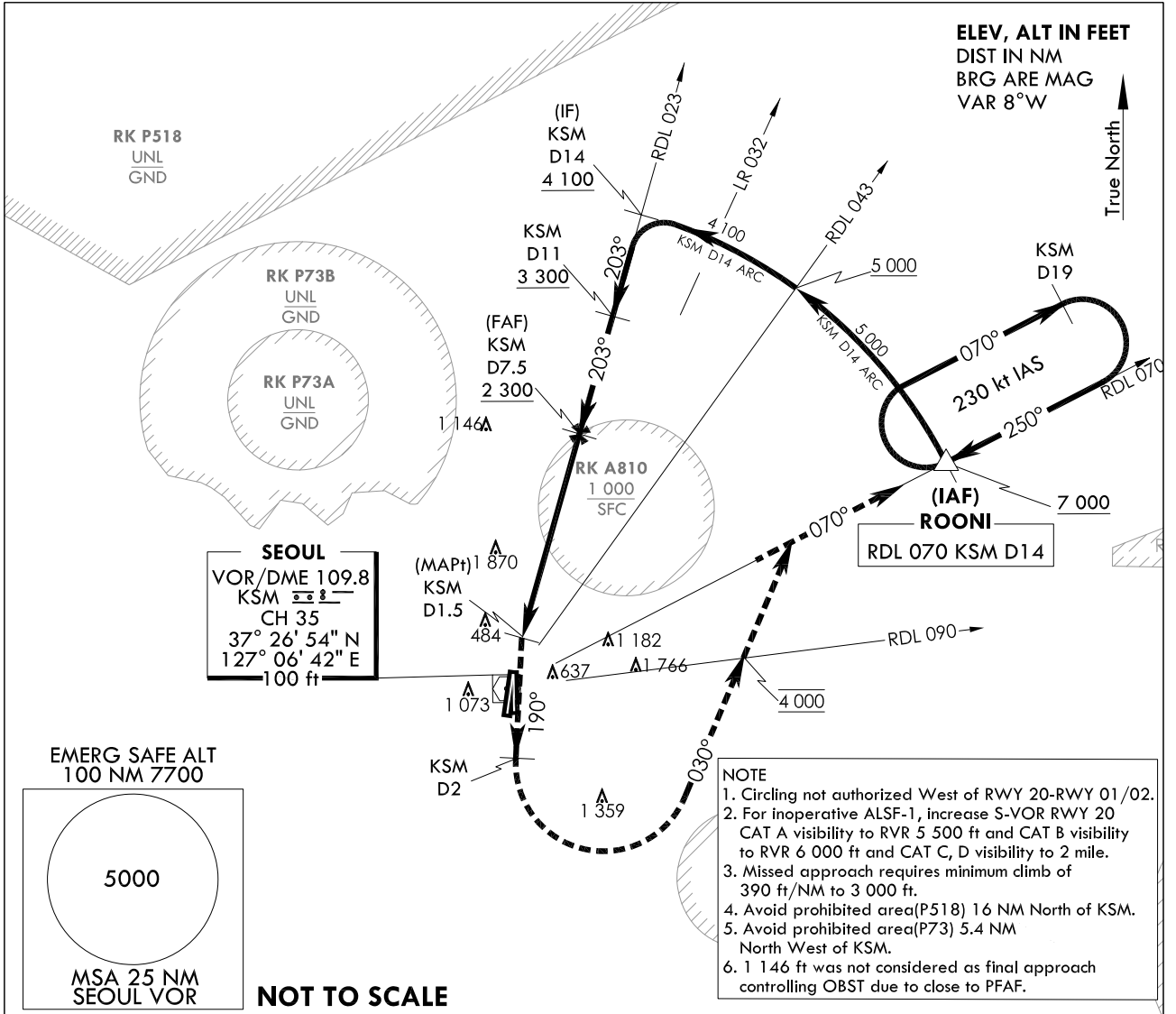
INSTRUMENT APPROACH CHART

AERODROME ELEV 93 ft
HEIGHTS RELATED TO
THR RWY 20 - ELEV 68 ft
HIGHEST ELEV TDZ 69 ft

SEOUL APP 123.8 363.8
SEOUL TWR 126.2
234.5 236.6

SEOUL/Seoul(RKSM)
VOR/DME
RWY 20

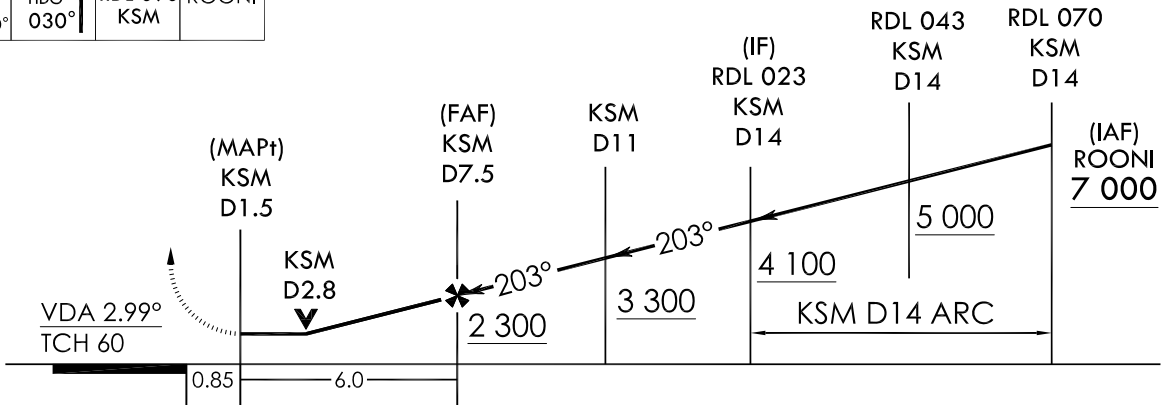
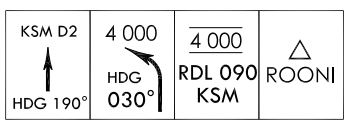
Note : Approach and Circle to land under U.S. TERPS.



TRANSITION ALT 14 000
TRANSITION LVL FL 140

Missed Approach Climb Rate table

KNOTS	60	120	180	240	300	TO
V/V(fpm)	390	770	1 150	1 530	1 910	3 000



CATEGORY	A	B	C	D	E
S-VOR RWY 20	820 / 35 751 (800 - 3/4)	820 / 40 751 (800 - 3/4)	820 - 1 3/4 751 (800 - 1 3/4)		N/A
Circling	1 020 - 1 1/4 927(1 000-1 1/4)		1 560 - 3 1 467(1 500-3)	2 260 - 3 2 167(2 200-3)	N/A

MISSED APPROACH
Climb HDG 190° to KSM 2DME and climbing left turn HDG 030° to cross RDL 090 KSM at 4 000 ft, then RDL 070 KSM to ROONI and hold, continue climb-in-holding to 7 000 ft.

Change : Information of procedure.

INTENTIONALLY

LEFT

BLANK

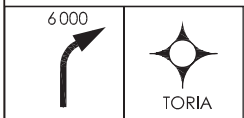
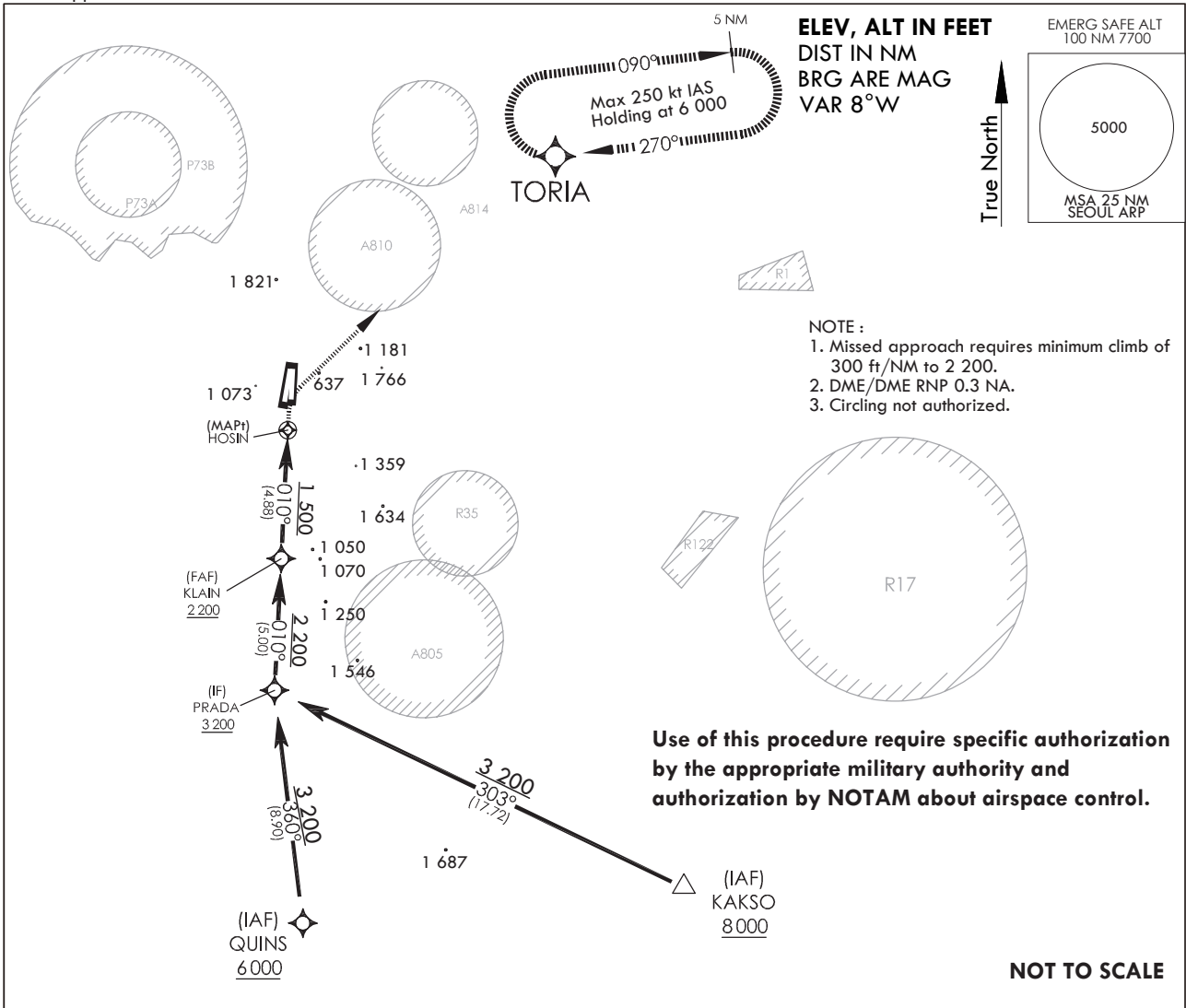
**INSTRUMENT
APPROACH
CHART**

AERODROME ELEV **94** ft
HEIGHTS RELATED TO
THR RWY 01 - ELEV **78** ft

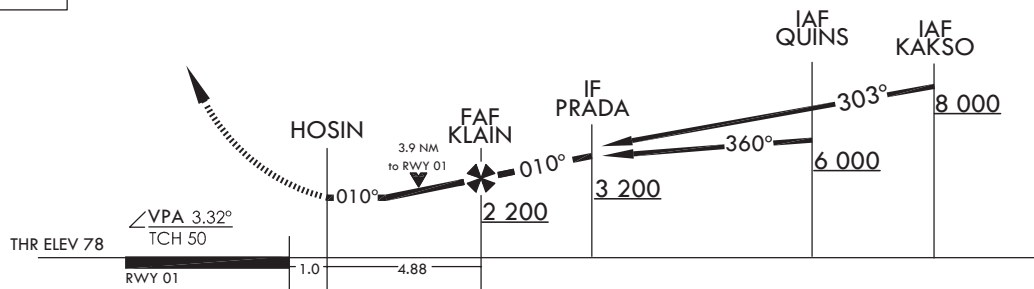
SEOUL APP 123.8 363.8
SEOUL TWR 126.2
236.6 234.5

**SEOUL/Seoul (RKSM)
RNAV(GNSS) RWY 01**

Note : Approach and Circle to land under U.S TERPS.



MISSED APPROACH
Climbing right turn 6 000 direct TORIA and hold.



CATEGORY	A	B	C	D	E
LNAV/ VNAV DA	NA				
LNAV	1 500-1¼ 1 422(1 500-1¼)	1 500-1½ 1 422(1 500-1½)	1 500-3 1 422(1 500-3)	NA	
CIRCLING	NA				

Change : Information of tower frequency (292.85 → 234.5).

SEOUL/Seoul (RKSM)
RNAV(GNSS) RWY 01

AERONAUTICAL DATA TABULATION

Instrument Approach Procedure Coding Tables

RNAV(GNSS) RWY 01(From QUINS)

Serial Number	Path Descriptor	Waypoint Identifier	Fly -Over	Course/Track ° M(° T)	Distance (NM)	Turn Direction	Altitude (ft)	Speed (kt)	Coordinates	VPA /TCH	Navigation specification	Remarks
001	IF	QUINS	-	-	-	-	+6 000	-	370620.2845N 1270801.9225E	-	RNPAPCH	IAF
002	TF	PRADA	-	359.9°/351.9°	8.9	-	+3 200	-	371509.3930N 1270628.1856E	-	RNPAPCH	IF
003	TF	KLAIN	-	9.8°/1.8°	5	-	+2 200	-	372009.6309N 1270639.9962E	-	RNPAPCH	FAF
004	TF	HOSIN	Y	9.8°/1.8°	4.88	-	+1 500	-	372502.5948N 1270651.5321E	3.32°/50	RNPAPCH	MAPt
005	DF	TORIA	-	-	-	R	6 000	-	373802.3748N 1272130.6133E	-	RNPAPCH	-
006	HM	TORIA	-	270.0°/262.0°	5	R	@6 000	-250	373802.3748N 1272130.6133E	-	RNPAPCH	HOLDING 5NM LEG

RNAV(GNSS) RWY 01(From KAKSO)

Serial Number	Path Descriptor	Waypoint Identifier	Fly -Over	Course/Track ° M(° T)	Distance (NM)	Turn Direction	Altitude (ft)	Speed (kt)	Coordinates	VPA /TCH	Navigation specification	Remarks
001	IF	KAKSO	-	-	-	-	+8 000	-	370745N 1272637E	-	RNPAPCH	IAF
002	TF	PRADA	-	302.8°/294.8°	17.72	-	+3 200	-	371509.3930N 1270628.1856E	-	RNPAPCH	IF
003	TF	KLAIN	-	9.8°/1.8°	5	-	+2 200	-	372009.6309N 1270639.9962E	-	RNPAPCH	FAF
004	TF	HOSIN	Y	9.8°/1.8°	4.88	-	+1 500	-	372502.5948N 1270651.5321E	3.32°/50	RNPAPCH	MAPt
005	DF	TORIA	-	-	-	R	6 000	-	373802.3748N 1272130.6133E	-	RNPAPCH	-
006	HM	TORIA	-	270.0°/262.0°	5	R	@6 000	-250	373802.3748N 1272130.6133E	-	RNPAPCH	HOLDING 5NM LEG

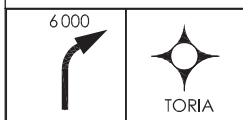
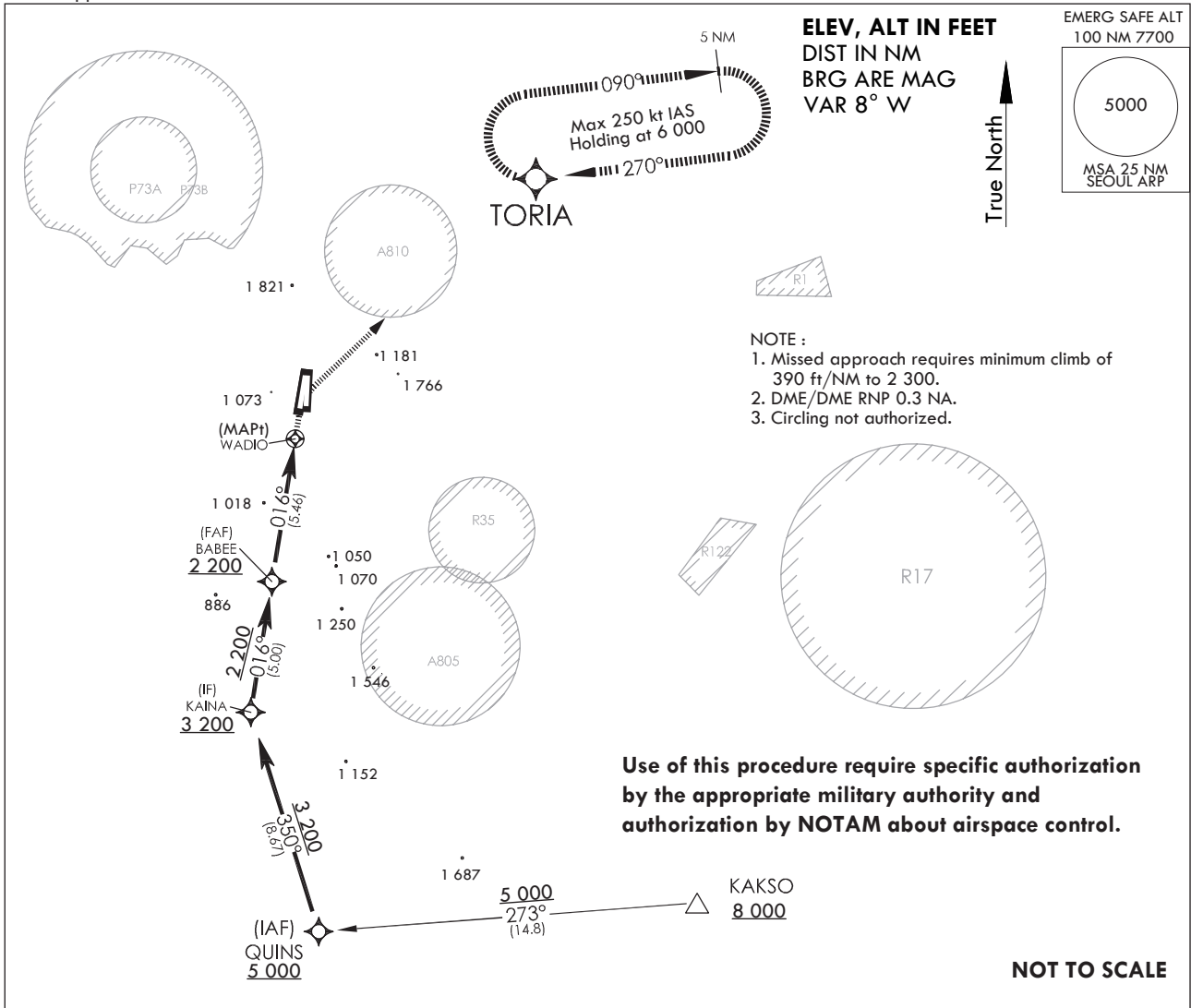
**INSTRUMENT
 APPROACH
 CHART**

AERODROME ELEV **94** ft
 HEIGHTS RELATED TO
 THR RWY 02 - ELEV **94** ft

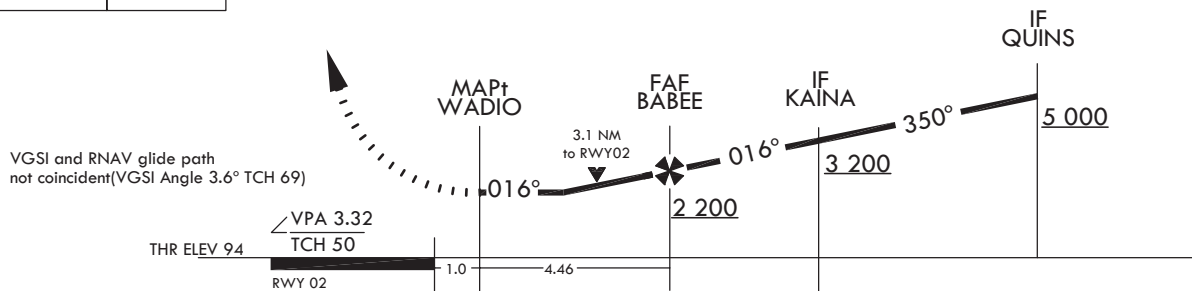
SEOUL APP 123.8 363.8
 SEOUL TWR 126.2
 236.6 234.5

SEOUL/Seoul (RKSM)
RNAV(GNSS) RWY 02

Note : Approach and Circle to land under U.S TERPS.



MISSED APPROACH
 Climbing right turn 6 000 ft direct TORIA and hold.



CATEGORY	A	B	C	D	E
LNAV/ VNAV DA	NA				NA
LNAV	1 240-1½ 1 146(1 200-1½)	1 240-1½ 1 146(1 200-1½)	1 240-3 1 146(1 200-3)		NA
CIRCLING	NA				

Change : Information of tower frequency (292.85 → 234.5).

AERONAUTICAL DATA TABULATION

Instrument Approach Procedure Coding Tables

RNAV(GNSS) RWY 02

Serial Number	Path Descriptor	Waypoint Identifier	Fly -Over	Course/Track ° M(° T)	Distance (NM)	Turn Direction	Altitude (ft)	Speed (kt)	Coordinates	VPA /TCH	Navigation specification	Remarks
001	IF	QUINS	-	-	-	-	+5 000	-	370620.2845N 1270801.9225E	-	RNPAPCH	IAF
002	TF	KAINA	-	349.67° / 341.67°	8.67	-	+3 200	-	371434.8404N 1270436.9589E	-	RNPAPCH	IF
003	TF	BABEE	-	16.07° / 8.07°	5	-	+2 200	-	371932.2479N 1270529.7485E	-	RNPAPCH	FAF
004	TF	WADIO	Y	16.10° / 8.10°	5.46	-	+1 240	-	372457.1290N 1270627.5325E	3.32°/50	RNPAPCH	MAPt
005	DF	TORIA	-	-	-	R	@6 000	-	373802.3748N 1272130.6133E	-	RNPAPCH	-
006	HM	TORIA	-	270.0° /262.0°	5	R	@6 000	-250	373802.3748N 1272130.6133E	-	RNPAPCH	HOLDING 5NM LEG

Feeder Routes

Serial Number	Path Descriptor	Waypoint Identifier	Fly -Over	Course/Track ° M(° T)	Distance (NM)	Turn Direction	Altitude (ft)	Speed (kt)	Coordinates	VPA /TCH	Navigation specification	Remarks
001	TF	KAKSO	-	-	-	-	+8 000	-	370745N 1272637E	-	RNAV1	EN ROUTE
002	TF	QUINS	-	272.67° / 264.67°	14.93	-	+5 000	-	370620.2845N 1270801.9225E	-	RNPAPCH	IAF

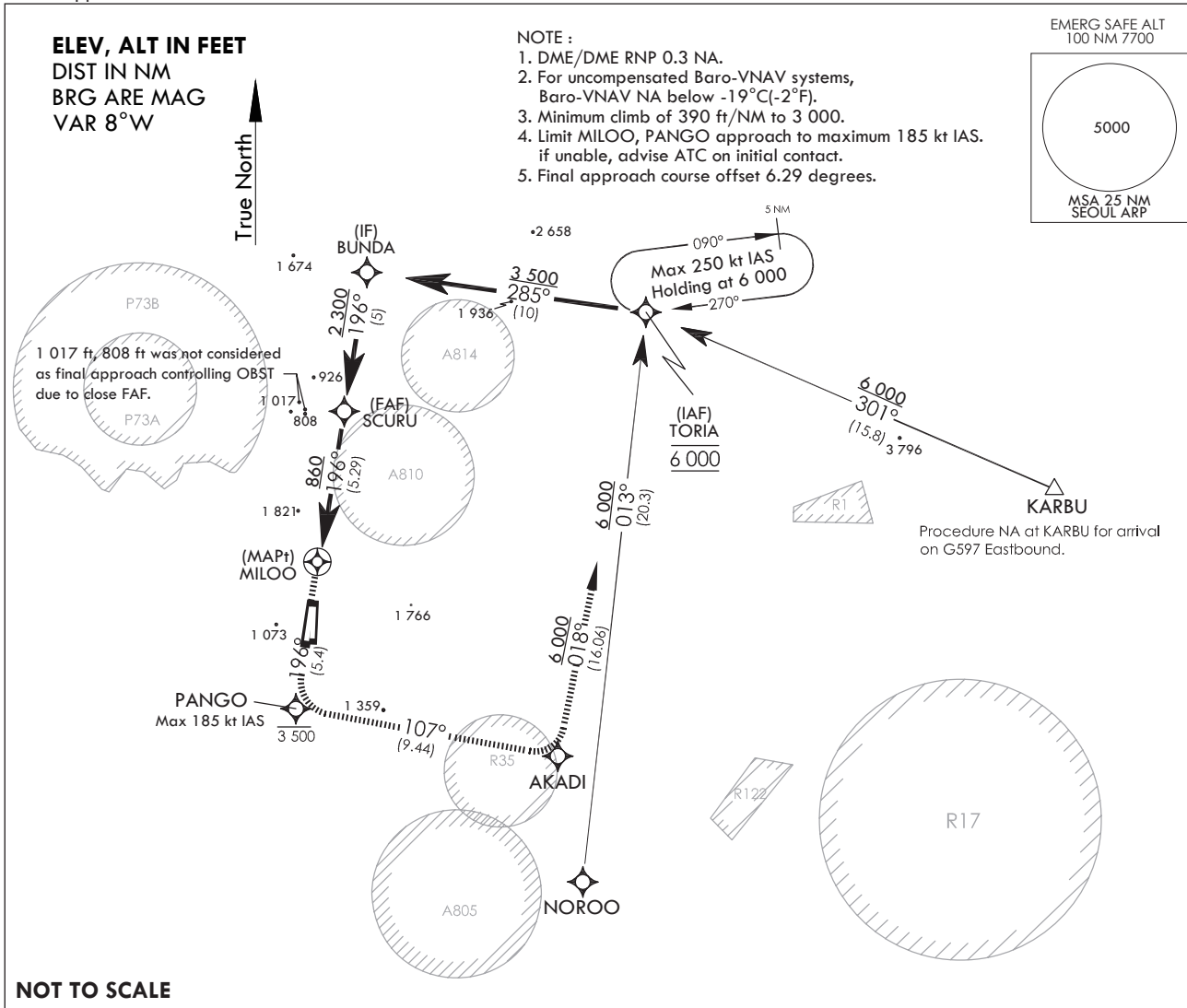
**INSTRUMENT
APPROACH
CHART**

AERODROME ELEV 94 ft
HEIGHTS RELATED TO
THR RWY 19 - ELEV 69 ft

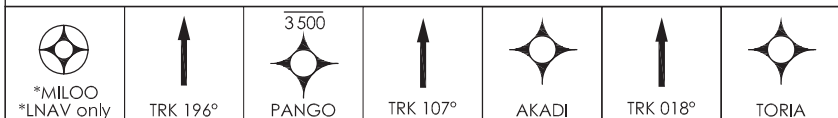
SEOUL APP 123.8 363.8
SEOUL TWR 126.2
236.6 234.5

**SEOUL/Seoul (RKSM)
RNAV(GNSS) RWY 19**

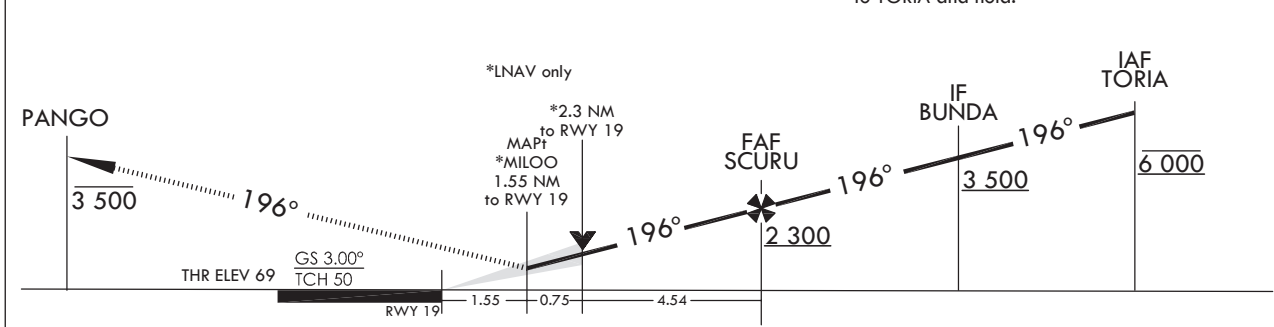
Note : Approach and Circle to land under U.S TERPS.



NOT TO SCALE



MISSED APPROACH
Climb on track 196° to cross PANGO at or below 3 500, then climbing left turn to 6 000 track 107° to AKADI, then left turn track 018° to TORIA and hold.



CATEGORY	A	B	C	D	E
LNAV/VNAV DA		711-2½	642(700-2½)		NA
LNAV MDA		860-2½	791(800-2½)		NA
CIRCLING	1 020-2½	926(1 000-2½)	1 560-3 1 466(1 500-3)	2 260-3 2 166(2 200-3)	NA

Change : Information of tower frequency (292.85 → 234.5).

SEOUL/Seoul (RKSM)
RNAV(GNSS) RWY 19

AERONAUTICAL DATA TABULATION

Instrument Approach Procedure Coding Tables

RNAV(GNSS) RWY 19

Serial Number	Path Descriptor	Waypoint Identifier	Fly -Over	Course/Track ° M(° T)	Distance (NM)	Turn Direction	Altitude (ft)	Speed (kt)	Coordinates	VPA /TCH	Navigation specification	Remarks
001	IF	TORIA	-	-	-	-	@6 000	-250	373802.3748N 1272130.6133E	-	RNPAPCH	IAF
002	TF	BUNDA	-	285.1°/277.1°	10	-	+3 500	-250	373916.2513N 1270900.8555E	-	RNPAPCH	IF
003	TF	SCURU	-	196.1°/188.1°	5	-	+2 300	-165	373418.8855N 1270807.7311E	-	RNPAPCH	FAF
004	TF	MILOO	Y	196.1°/188.1°	5.29	-	+860	-165	372904.2951N 1270711.5747E	3.0°/50	RNPAPCH	MAPt
005	TF	PANGO	-	196.1°/188.1°	5.4	-	-3 500	-185	372343.154N 1270614.3668E	-	RNPAPCH	-
006	TF	AKADI	-	107.1°/099.1°	9.44	-	6 000	-250	372213.0036N 1271756.0695E	-	RNPAPCH	-
007	TF	TORIA	-	018.2°/10.2°	16.06	-	+6 000	-250	373802.3748N 1272130.6133E	-	RNPAPCH	-
008	HM	TORIA	-	270.0°/262.0°	-	R	@6 000	-250	373802.3748N 1272130.6133E	-	RNPAPCH	HOLDING 5NM LEG

Feeder Routes

Serial Number	Path Descriptor	Waypoint Identifier	Fly -Over	Course/Track ° M(° T)	Distance (NM)	Turn Direction	Altitude (ft)	Speed (kt)	Coordinates	VPA /TCH	Navigation specification	Remarks
001	TF	KARBU	-	-	-	-	-	-	373159N 1273952E	-	RNAV1	FEEDER ROUTE
002	HM	TORIA	-	300.6°/292.6°	15.8	-	+6 000	-250	373802.3748N 1272130.6133E	-	RNPAPCH	HOLDING 5NM LEG

Feeder Routes

Serial Number	Path Descriptor	Waypoint Identifier	Fly -Over	Course/Track ° M(° T)	Distance (NM)	Turn Direction	Altitude (ft)	Speed (kt)	Coordinates	VPA /TCH	Navigation specification	Remarks
001	TF	NOROO	-	-	-	-	-	-	371745.54N 1271908.61E	-	RNAV1	FEEDER ROUTE
002	HM	TORIA	-	13.3°/5.3°	20.34	-	+6 000	-250	373802.3748N 1272130.6133E	-	RNPAPCH	HOLDING 5NM LEG

INSTRUMENT APPROACH CHART

AERODROME ELEV **94** ft
HEIGHTS RELATED TO
THR RWY 20 - ELEV **70** ft

SEOUL APP 123.8 363.8
SEOUL TWR 126.2
236.6 234.5

**SEOUL/Seoul (RKSM)
RNAV(GNSS) RWY 20**

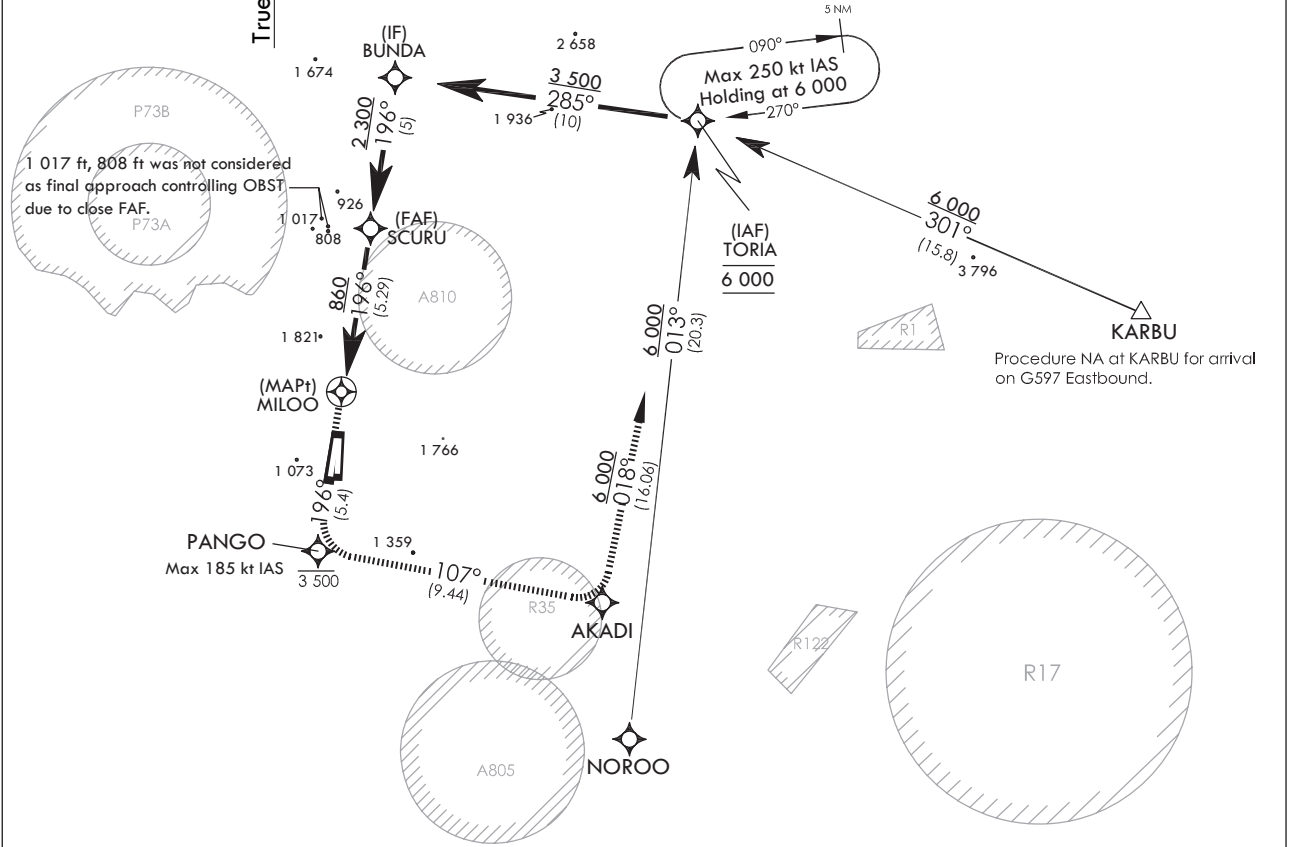
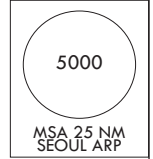
Note : Approach and Circle to land under U.S TERPS.

**ELEV, ALT IN FEET
DIST IN NM
BRG ARE MAG
VAR 8° W**

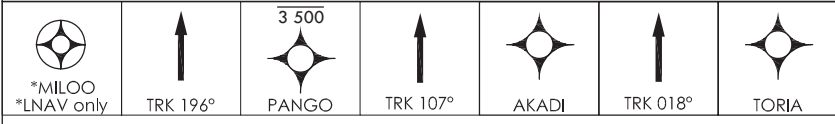
NOTE :

1. DME/DME RNP 0.3 NA.
2. For uncompensated Baro-VNAV systems, Baro-VNAV NA below -19°C(-2°F).
3. Minimum climb of 390 ft/NM to 3 000.
4. Limit MILOO, PANGO approach to maximum 185 kt IAS. if unable, advise ATC on initial contact.

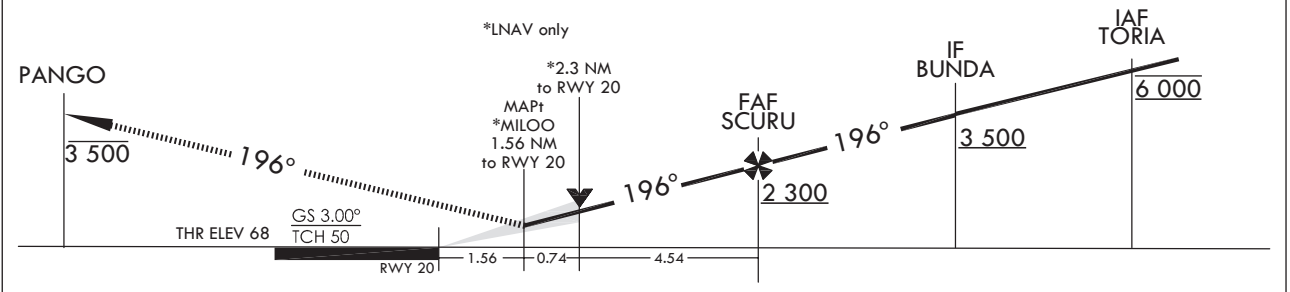
EMERG SAFE ALT
100 NM 7700



NOT TO SCALE



MISSED APPROACH
Climb on track 196° to cross PANGO at or below 3 500 ft, then climbing left turn to 6 000 ft track 107° to AKADI, then left turn track 018° to TORIA and hold.



CATEGORY	A	B	C	D	E
LANV/ VNAV DA		711-2½	641(700-2½)		NA
LNAV MDA		860-2½	790(800-2½)		NA
CIRCLING	1 020-2½	926(1 000-2½)	1 560-3 1 466(1 500-3)	2 260-3 2 166(2 200-3)	NA

Change : Information of tower frequency (292.85 → 234.5).

SEOUL/Seoul (RKSM)
RNAV(GNSS) RWY 20

AERONAUTICAL DATA TABULATION

Instrument Approach Procedure Coding Tables

RNAV(GNSS) RWY 20

Serial Number	Path Descriptor	Waypoint Identifier	Fly -Over	Course/Track ° M(° T)	Distance (NM)	Turn Direction	Altitude (ft)	Speed (kt)	Coordinates	VPA /TCH	Navigation specification	Remarks
001	IF	TORIA	-	-	-	-	@6 000	-250	373802.3748N 1272130.6133E	-	RNPAPCH	IAF
002	TF	BUNDA	-	285.1°/277.1°	10	-	+3 500	-250	373916.2513N 1270900.8555E	-	RNPAPCH	IF
003	TF	SCURU	-	196.1°/188.1°	5	-	+2 300	-165	373418.8855N 1270807.7311E	-	RNPAPCH	FAF
004	TF	MILOO	Y	196.1°/188.1°	5.29	-	+860	-165	372904.2951N 1270711.5747E	3.0°/50	RNPAPCH	MAPt
005	TF	PANGO	-	196.1°/188.1°	5.4	-	-3 500	-185	372343.154N 1270614.3668E	-	RNPAPCH	-
006	TF	AKADI	-	107.1°/099.1°	9.44	-	6 000	-250	372213.0036N 1271756.0695E	-	RNPAPCH	-
007	TF	TORIA	-	018.2°/10.2°	16.058	-	+6 000	-250	373802.3748N 1272130.6133E	-	RNPAPCH	-
008	HM	TORIA	-	270.0°/262.0°	-	R	@6 000	-250	373802.3748N 1272130.6133E	-	RNPAPCH	HOLDING 5NM LEG

Feeder Routes

Serial Number	Path Descriptor	Waypoint Identifier	Fly -Over	Course/Track ° M(° T)	Distance (NM)	Turn Direction	Altitude (ft)	Speed (kt)	Coordinates	VPA /TCH	Navigation specification	Remarks
001	TF	KARBU	-	-	-	-	-	-	373159N 1273952E	-	RNAV1	FEEDER ROUTE
002	HM	TORIA	-	300.6°/292.6°	15.8	-	+6 000	-250	373802.3748N 1272130.6133E	-	RNPAPCH	HOLDING 5NM LEG

Feeder Routes

Serial Number	Path Descriptor	Waypoint Identifier	Fly -Over	Course/Track ° M(° T)	Distance (NM)	Turn Direction	Altitude (ft)	Speed (kt)	Coordinates	VPA /TCH	Navigation specification	Remarks
001	TF	NOROO	-	-	-	-	-	-	371745.54N 1271908.61E	-	RNAV1	FEEDER ROUTE
002	HM	TORIA	-	13.3°/5.3°	20.34	-	+6 000	-250	373802.3748N 1272130.6133E	-	RNPAPCH	HOLDING 5NM LEG

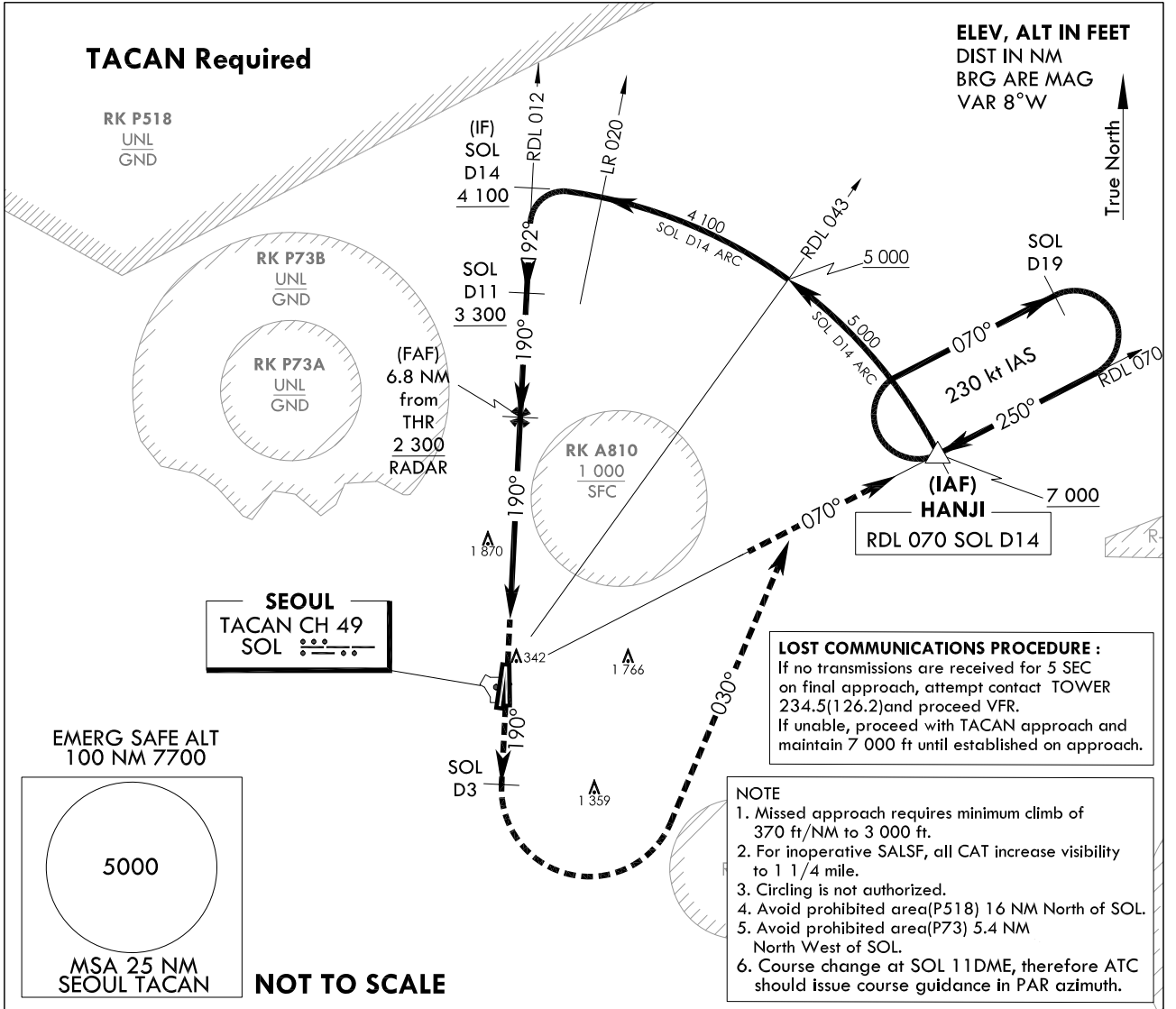
**INSTRUMENT
APPROACH
CHART**

AERODROME ELEV 93 ft
HEIGHTS RELATED TO
THR RWY 19 - ELEV 68 ft

SEOUL APP 123.8 363.8
SEOUL TWR 126.2
234.5 236.6

SEOUL/Seoul(RKSM)
PAR Z
RWY 19

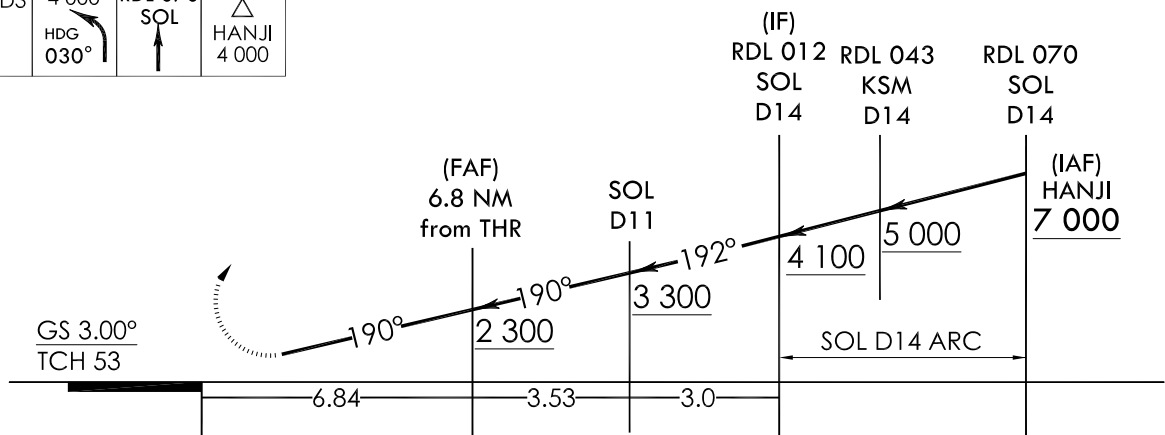
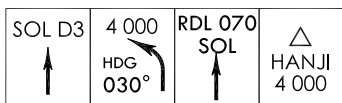
Note : Approach and Circle to land under U.S. TERPS.



TRANSITION ALT 14 000
TRANSITION LVL FL 140

Missed Approach Climb Rate table

KNOTS	60	120	180	240	300	TO
V/V(fpm)	370	740	1 110	1 480	1 850	3 000



MISSED APPROACH

Climb to 4 000 ft via HDG 190° to SOL 3 DME and climbing left turn HDG 030° to intercept RDL 070 SOL, then climb to 7 000 ft on RDL 070 SOL to HANJI and hold, continue climb-in-holding to 7 000 ft.

CATEGORY	A	B	C	D	E
S-PAR RWY 19		465 / 55	393 (400 - 1)		

Change : Information of procedure.

INTENTIONALLY

LEFT

BLANK

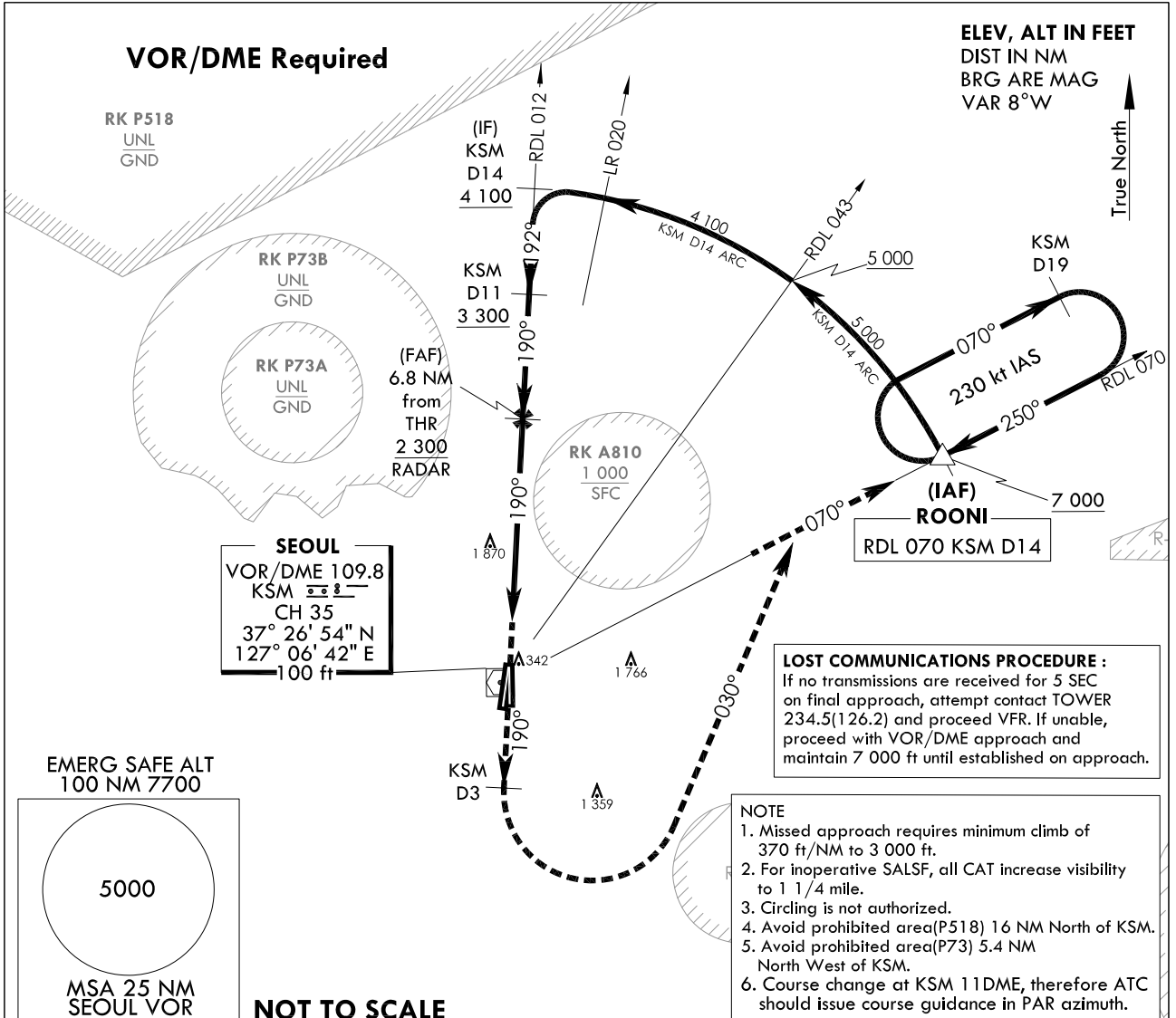
**INSTRUMENT
APPROACH
CHART**

AERODROME ELEV 93 ft
HEIGHTS RELATED TO
THR RWY 19 - ELEV 68 ft

SEOUL APP 123.8 363.8
SEOUL TWR 126.2
234.5 236.6

SEOUL/Seoul(RKSM)
PAR Y
RWY 19

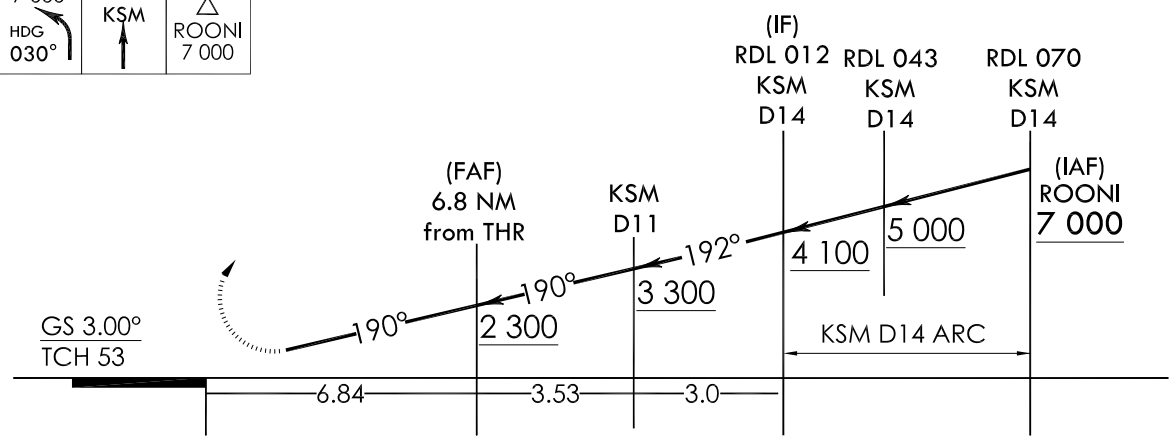
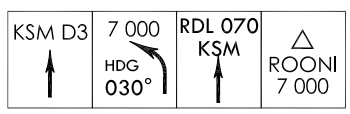
Note : Approach and Circle to land under U.S. TERPS.



TRANSITION ALT 14 000
TRANSITION LVL FL 140

Missed Approach Climb Rate table

KNOTS	60	120	180	240	300	TO
V/V(fpm)	370	740	1 110	1 480	1 850	3 000



MISSED APPROACH
Climb to 4 000 ft via HDG 190° to KSM 3DME and climbing left turn HDG 030° to intercept RDL 070 KSM, then climb to 7 000 ft on RDL 070 KSM to ROONI and hold, continue climb-in-holding to 7 000 ft.

CATEGORY	A	B	C	D	E
S-PAR RWY 19		465 / 55	393 (400 - 1)		

Change : Information of procedure.

INTENTIONALLY

LEFT

BLANK

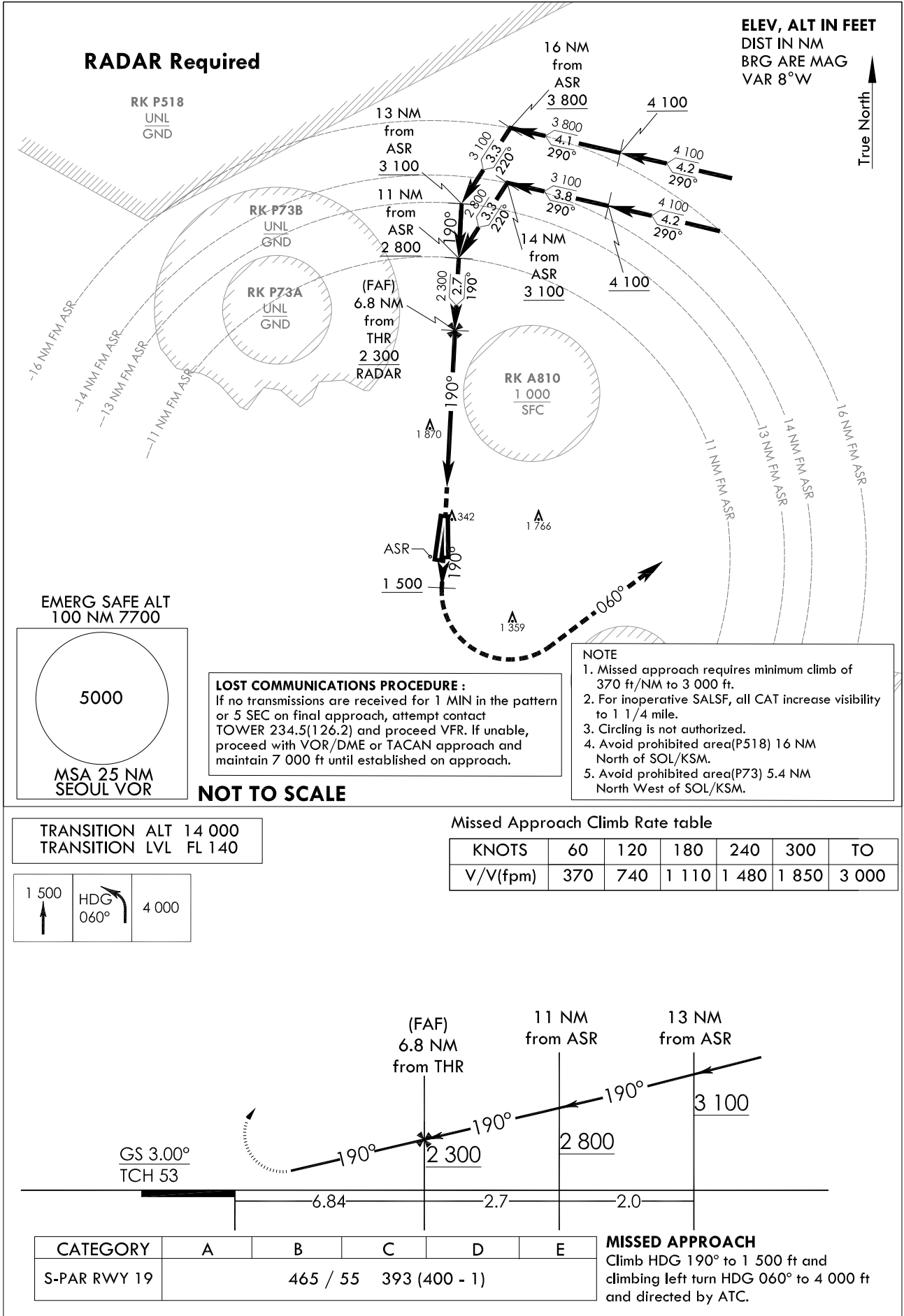
**INSTRUMENT
APPROACH
CHART**

AERODROME ELEV 93 ft
HEIGHTS RELATED TO
THR RWY 19 - ELEV 68 ft

SEOUL APP 123.8 363.8
SEOUL TWR 126.2
234.5 236.6

SEOUL/Seoul(RKSM)
PAR X
RWY 19

Note : Approach and Circle to land under U.S. TERPS.



Change : Information of procedure.

INTENTIONALLY

LEFT

BLANK

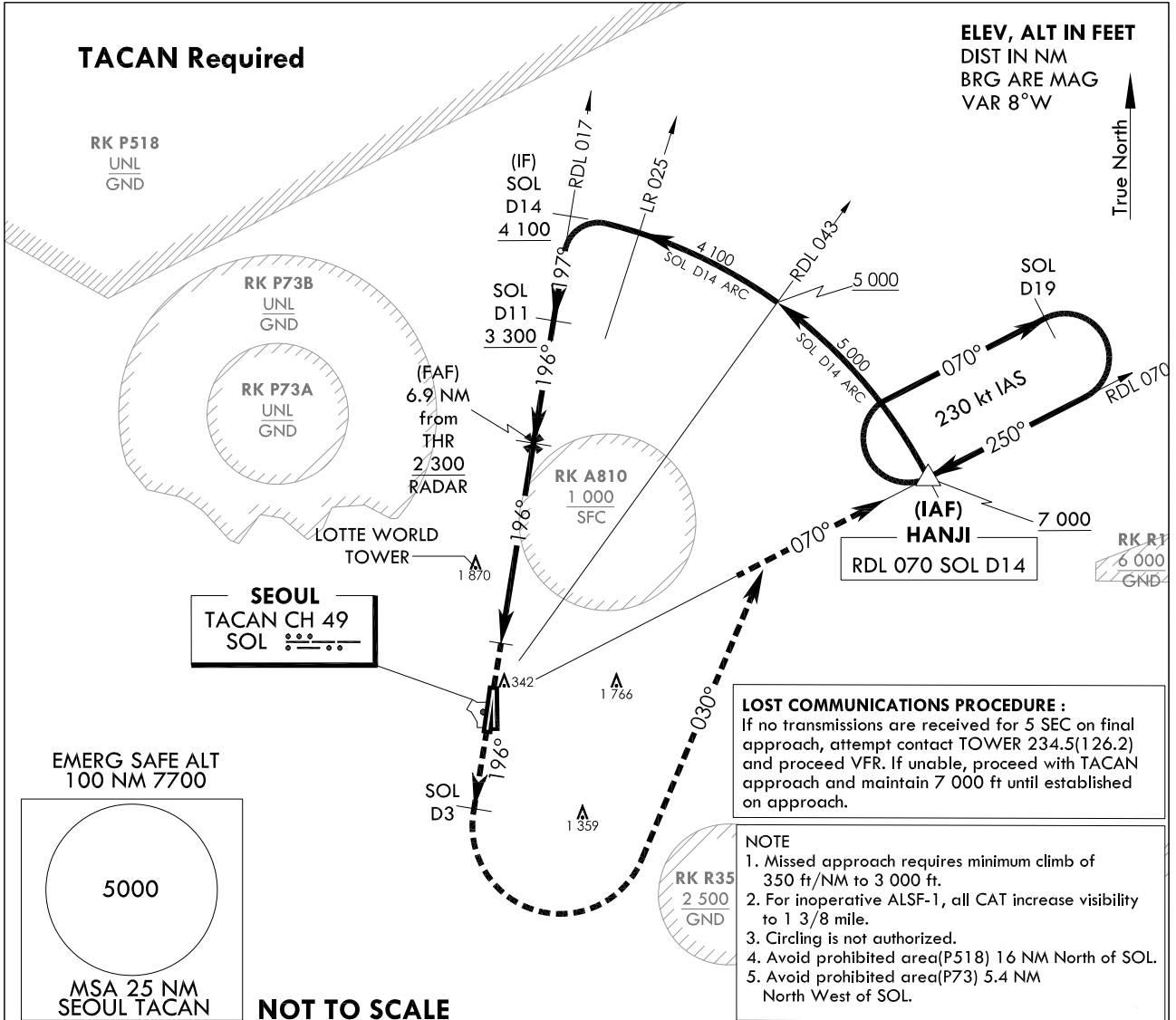
**INSTRUMENT
APPROACH
CHART**

AERODROME ELEV 93 ft
HEIGHTS RELATED TO
THR RWY 20 - ELEV 68 ft
HIGHEST ELEV TDZ 69 ft

SEOUL APP 123.8 363.8
SEOUL TWR 126.2
234.5 236.6

SEOUL/Seoul(RKSM)
PAR Z
RWY 20

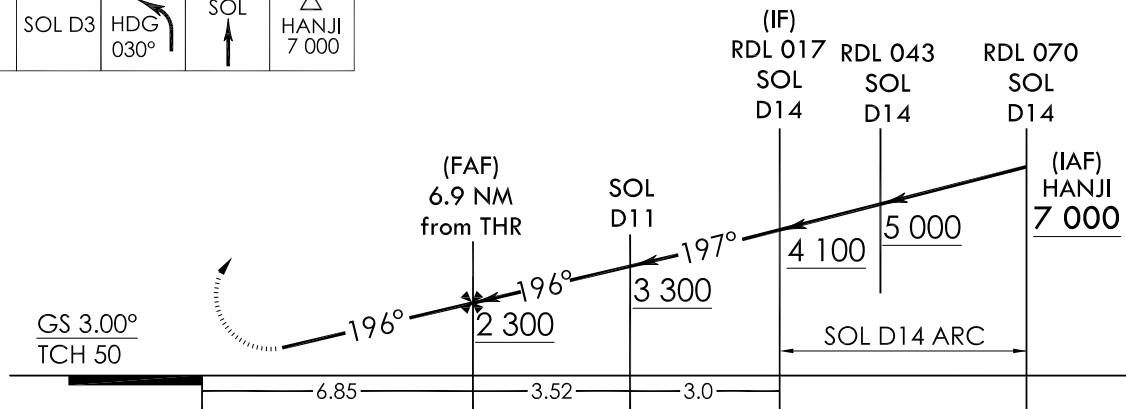
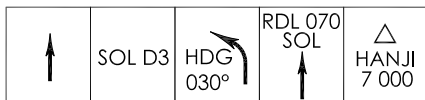
Note : Approach and Circle to land under U.S. TERPS.



TRANSITION ALT 14 000
TRANSITION LVL FL 140

Missed Approach Climb Rate table

KNOTS	60	120	180	240	300	TO
V/V(fpm)	350	700	1 050	1 400	1 750	3 000



MISSED APPROACH

Climb to 4 000 ft via HDG 196° to SOL 3DME and climbing left turn HDG 030° to intercept RDL 070 SOL, then climb to 7 000 ft on RDL 070 SOL to HANJI and hold, continue climb-in-holding to 7 000 ft.

CATEGORY	A	B	C	D	E
S-PAR RWY 20		473 / 45	404 (400 - 7/8)		N/A

Change : Information of missed approach.

INTENTIONALLY

LEFT

BLANK

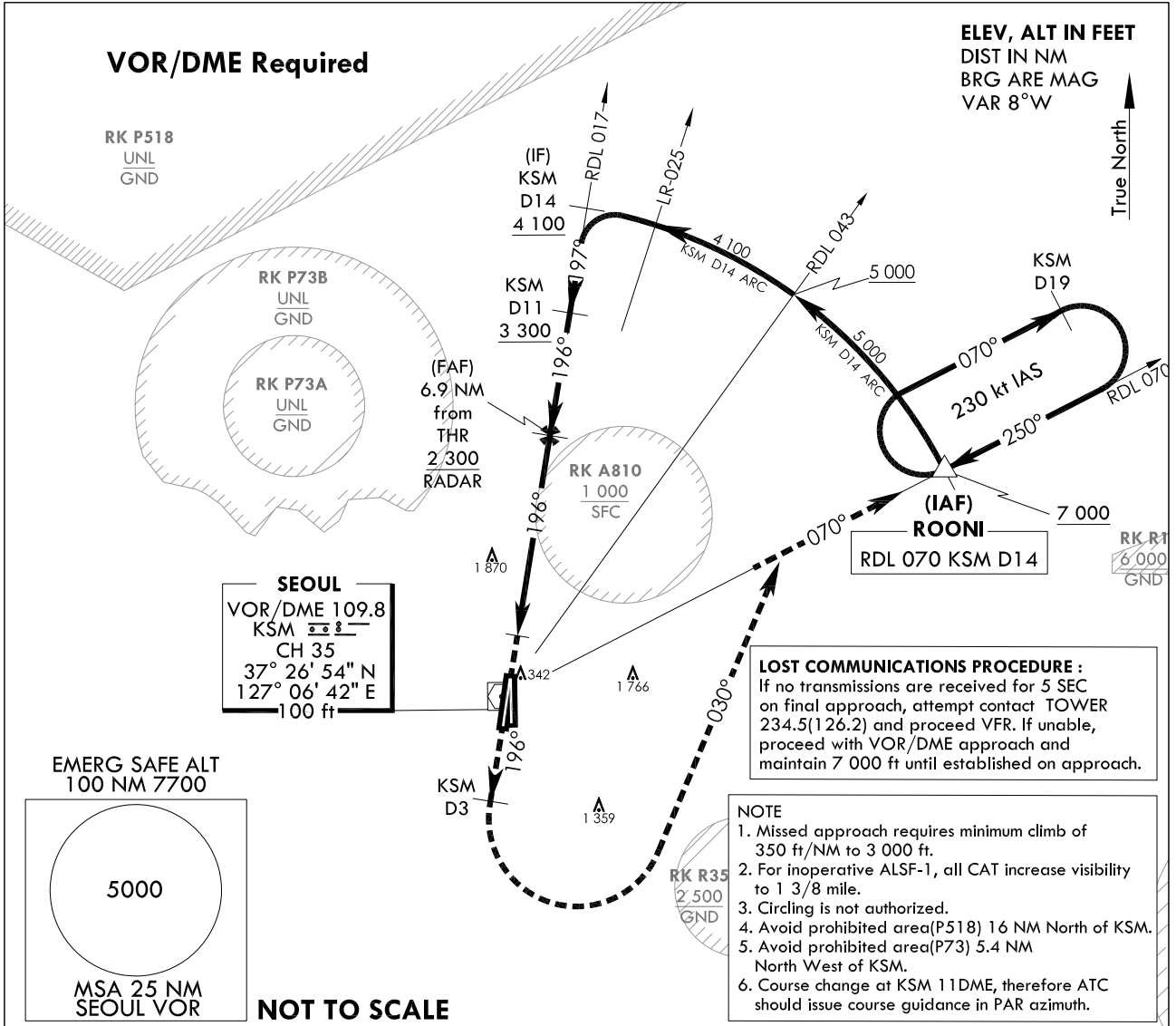
**INSTRUMENT
APPROACH
CHART**

AERODROME ELEV 93 ft
HEIGHTS RELATED TO
THR RWY 20 - ELEV 68 ft
HIGHEST ELEV TDZ 69 ft

SEOUL APP 123.8 363.8
SEOUL TWR 126.2
234.5 236.6

SEOUL/Seoul(RKSM)
PAR Y
RWY 20

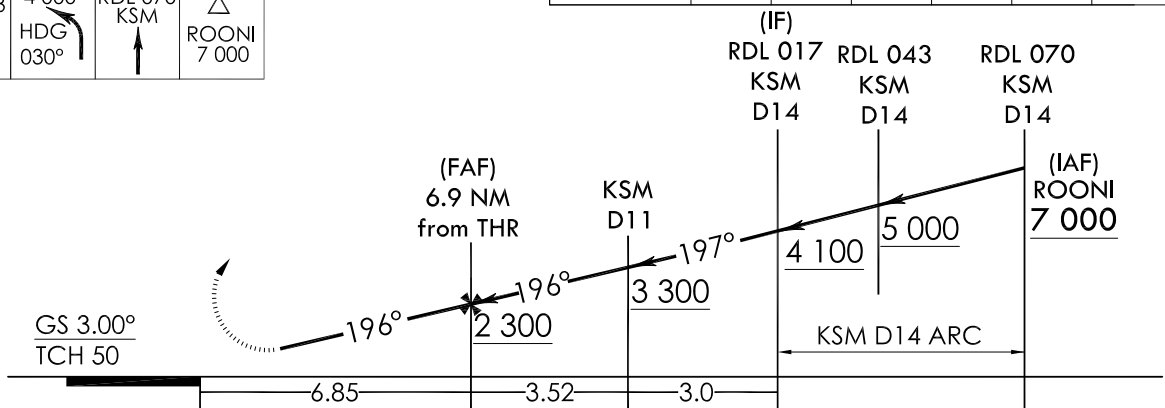
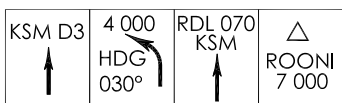
Note : Approach and Circle to land under U.S. TERPS.



TRANSITION ALT 14 000
TRANSITION LVL FL 140

Missed Approach Climb Rate table

KNOTS	60	120	180	240	300	TO
V/V(fpm)	350	700	1 050	1 400	1 750	3 000



NOTE : VGSI and PAR glidepath not coincident : (VGSI Angle 3.00° / TCH 61).

MISSED APPROACH

Climb to 4 000 ft via HDG 196° to KSM 3DME and climbing left turn HDG 030° to intercept RDL 070 KSM, then climb to 7 000 ft on RDL 070 KSM to ROONI and hold, continue climb-in-holding to 7 000 ft.

CATEGORY	A	B	C	D	E
S-PAR RWY 20	473 / 45	404 (400 - 7/8)			N/A

Change : Information of missed approach.

INTENTIONALLY

LEFT

BLANK

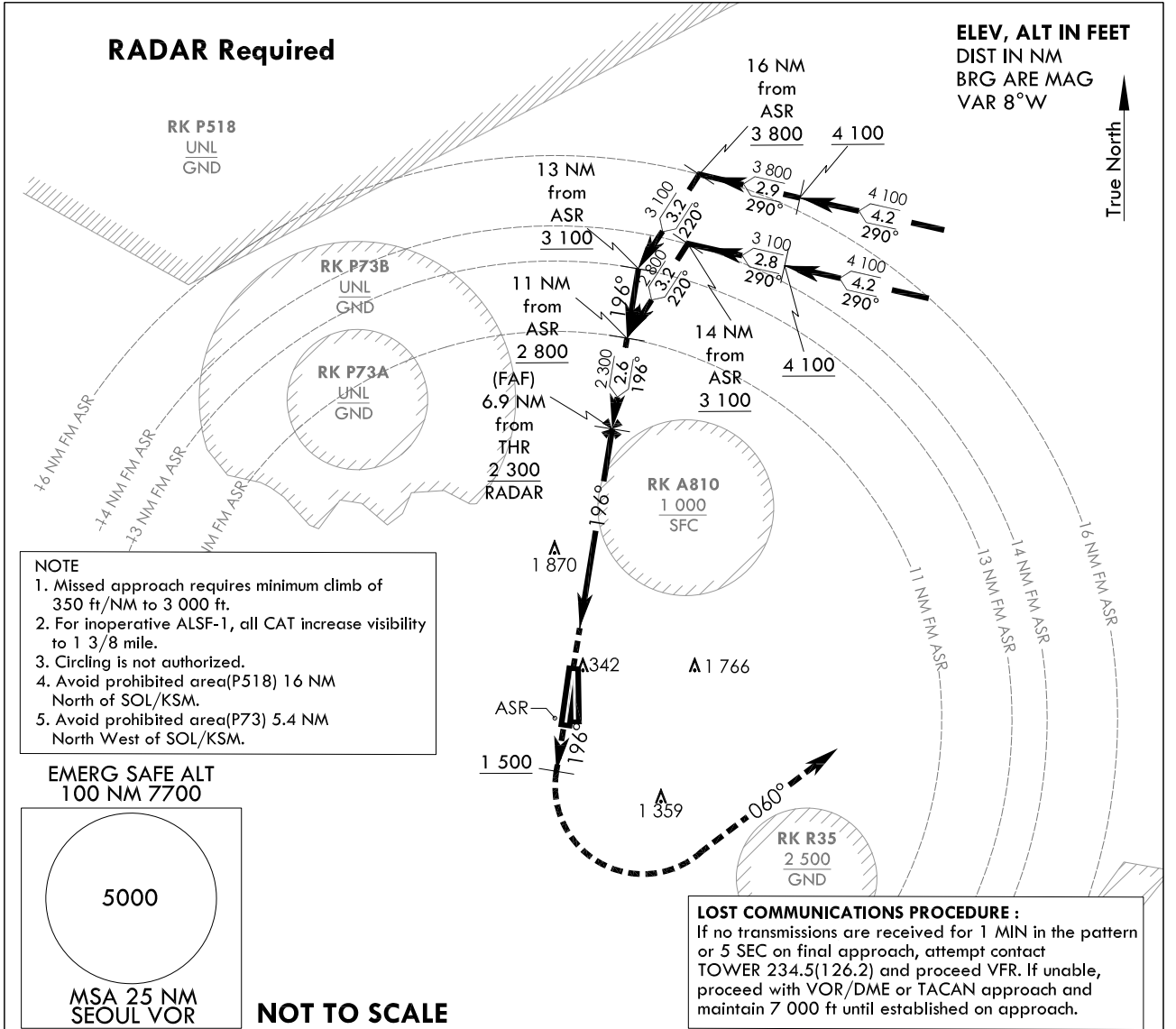
**INSTRUMENT
APPROACH
CHART**

AERODROME ELEV 93 ft
HEIGHTS RELATED TO
THR RWY 20 - ELEV 68 ft
HIGHEST ELEV TDZ 69 ft

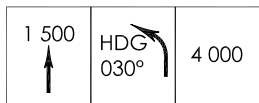
SEOUL APP 123.8 363.8
SEOUL TWR 126.2
234.5 236.6

SEOUL/Seoul(RKSM)
PAR X
RWY 20

Note : Approach and Circle to land under U.S. TERPS.

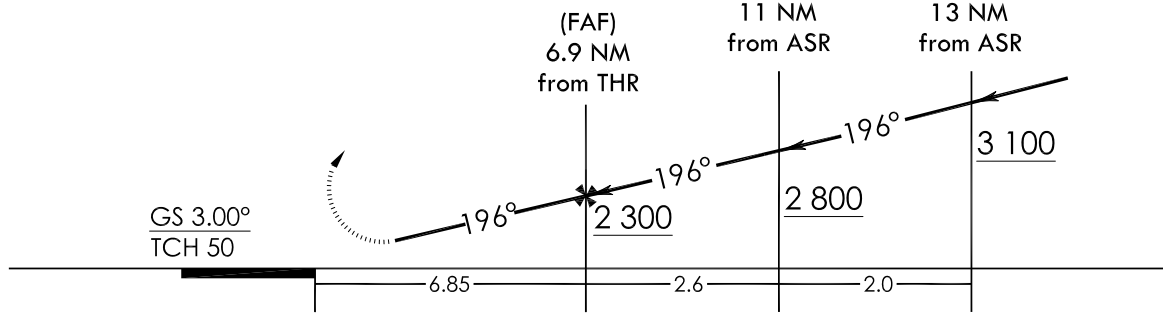


TRANSITION ALT 14 000
TRANSITION LVL FL 140



Missed Approach Climb Rate table

KNOTS	60	120	180	240	300	TO
V/V(fpm)	350	700	1 050	1 400	1 750	3 000



NOTE : VGSI and PAR glidepath not coincident : (VGSI Angle 3.00° / TCH 61).

CATEGORY	A	B	C	D	E
S-PAR RWY 20		473 / 45	404 (400 - 7/8)		

MISSED APPROACH
Climb HDG 196° to 1 500 ft and climbing left turn HDG 060° to 4 000 ft and directed by ATC.

Change : Information of procedure.

INTENTIONALLY

LEFT

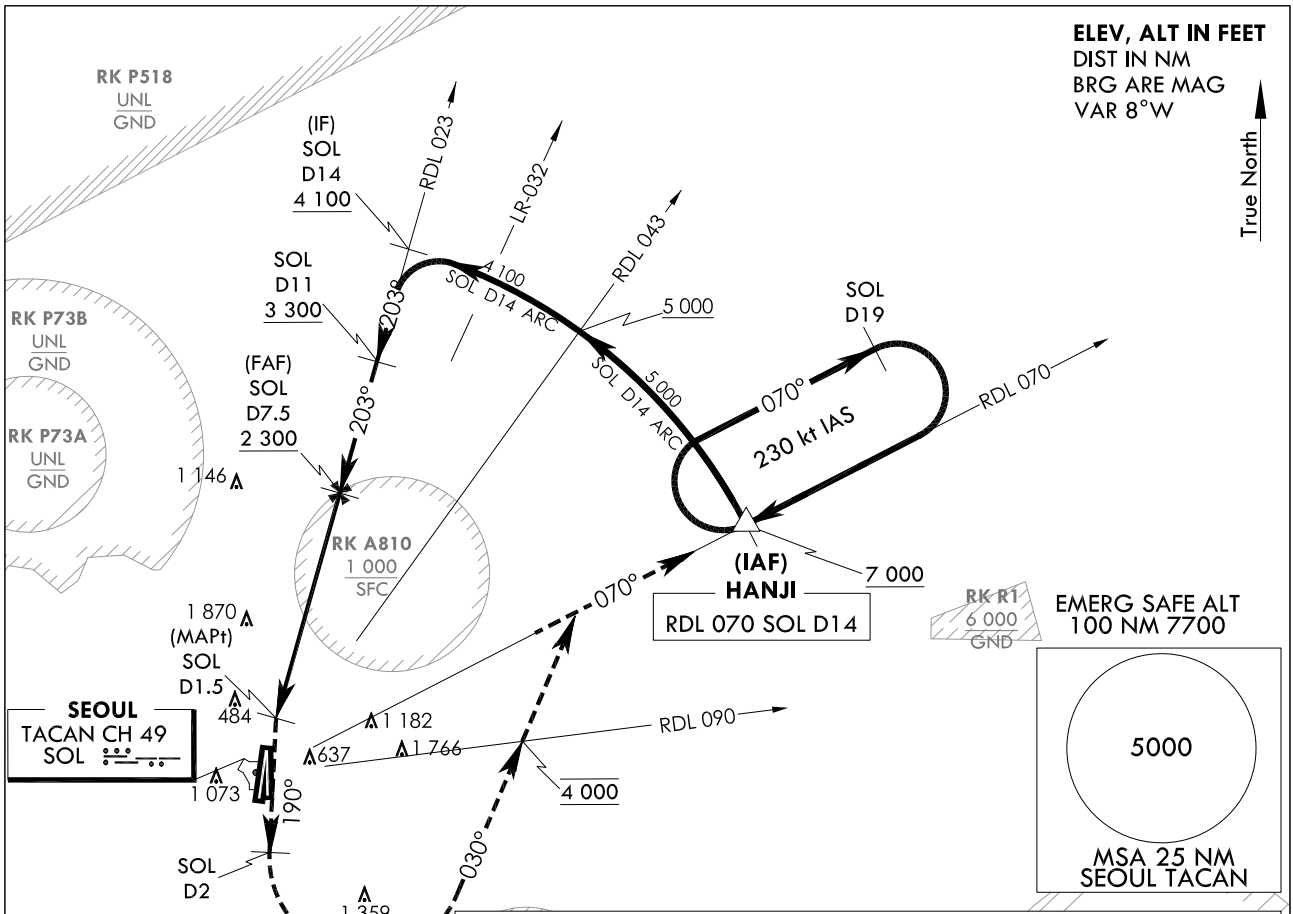
BLANK

**INSTRUMENT
APPROACH
CHART**

AERODROME ELEV 93 ft
HEIGHTS RELATED TO
THR RWY 19 - ELEV 68 ft

SEOUL APP 123.8 363.8
SEOUL TWR 126.2
234.5 236.6

SEOUL/Seoul(RKSM)
TACAN
RWY 19



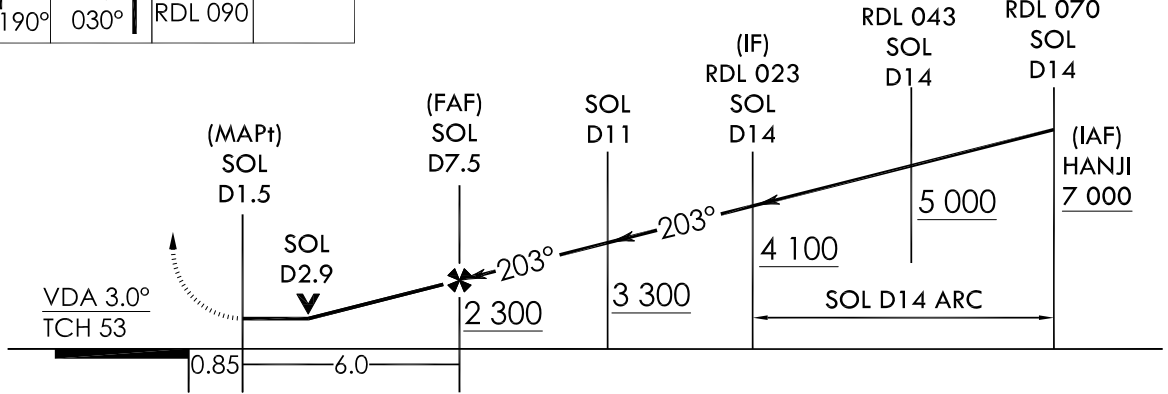
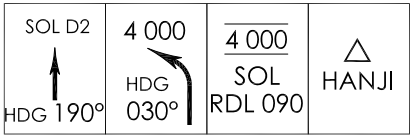
- NOTE :**
1. Circling not authorized West of RWY 19 - RWY 01/02.
 2. For inoperative SALSF, increase S-TAC RWY 19 CAT A visibility to RVR 5 500 and CAT B visibility to RVR 6 000 and CAT C,D visibility to 2 miles.
 3. Missed approach requires minimum climb of 390 ft/NM to 3 000 ft.
 4. Avoid prohibited area (P518) 16 NM North of SOL.
 5. Avoid prohibited area (P73) 5.4 NM North West of SOL.
 6. 1 146 ft was not considered as final approach controlling OBST due to close to PFAF.

NOT TO SCALE

TRANSITION ALT 14 000
TRANSITION LVL FL 140

Missed Approach Climb Rate table

KNOTS	60	120	180	240	300	TO
V/V(fpm)	390	770	1 150	1 530	1 910	3 000



CATEGORY	A	B	C	D	E
S-TAC RWY 19	820 / 40 748 (800 - 3/4)	820 / 55 748 (800 - 1)	820 - 1 7/8 748 (800 - 1 7/8)		N/A
Circling	1 020 - 1 1/4 927(1 000-1 1/4)		1 560 - 3 1 467(1 500-3)	2 260 - 3 2 167(2 200-3)	N/A

MISSED APPROACH :
Climb HDG 190° to SOL 2 DME and climbing left turn HDG 030° to cross RDL 090 SOL at 4 000 ft, then RDL 070 SOL to HANJI and hold, continue climb-in-holding to 7 000 ft.

Change : New procedure.

INTENTIONALLY

LEFT

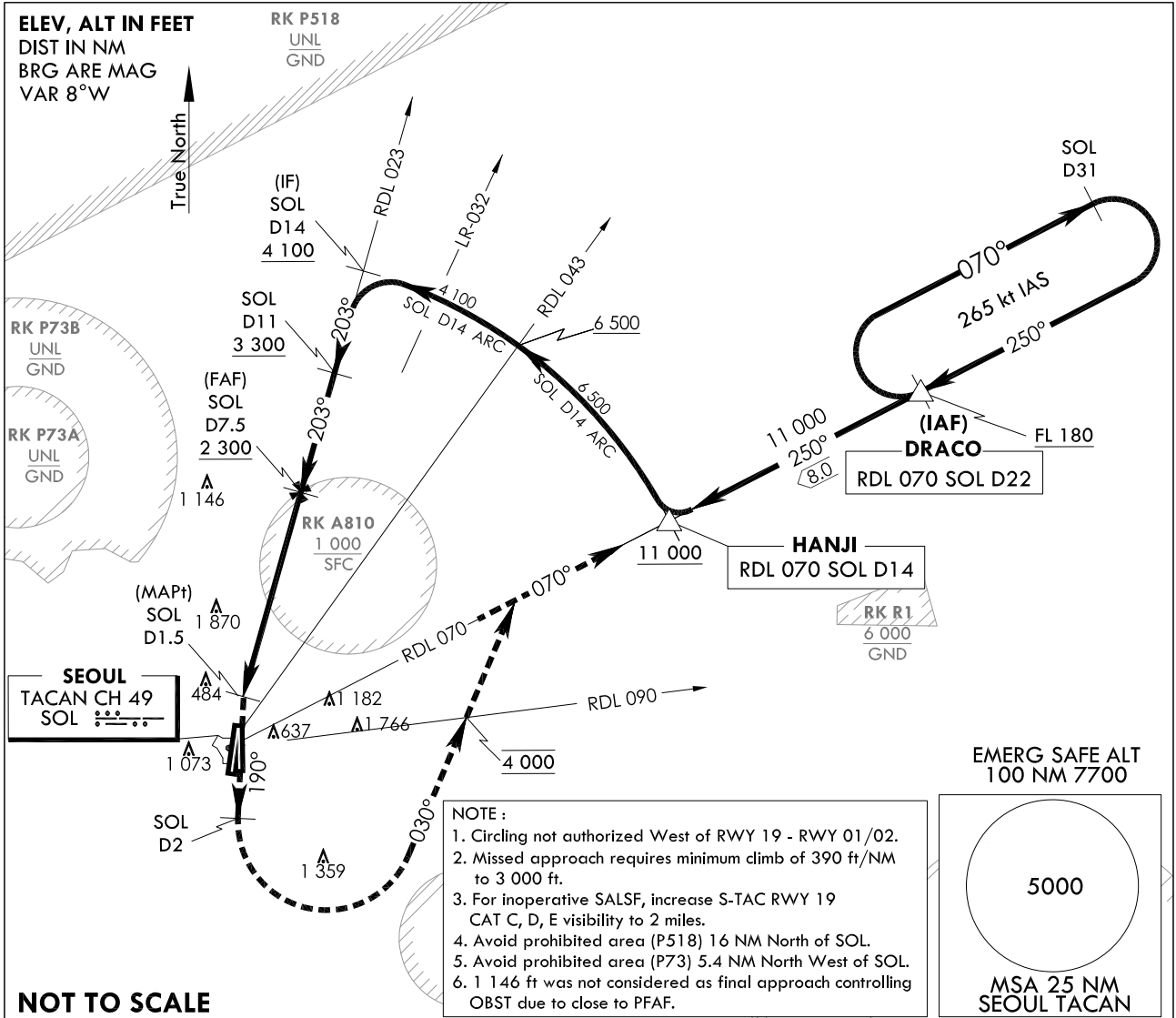
BLANK

**INSTRUMENT
APPROACH
CHART**

AERODROME ELEV 93 ft
HEIGHTS RELATED TO
THR RWY 19 - ELEV 68 ft

SEOUL APP 123.8 363.8
SEOUL TWR 126.2
234.5 236.6

SEOUL/Seoul(RKSM)
HI-TACAN
RWY 19

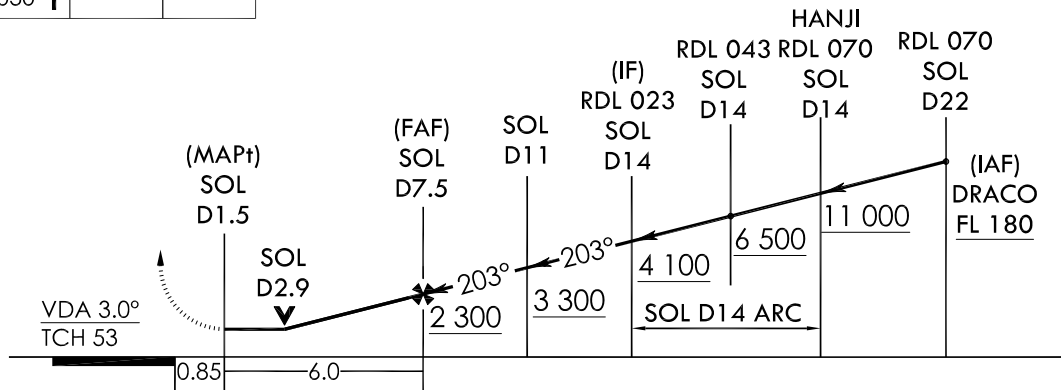
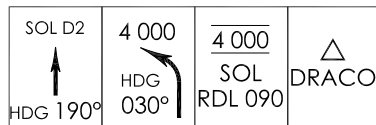


NOT TO SCALE

TRANSITION ALT 14 000
TRANSITION LVL FL 140

Missed Approach Climb Rate table

KNOTS	60	120	180	240	300	TO
V/V(fpm)	390	770	1 150	1 530	1 910	3 000



CATEGORY	A	B	C	D	E
S-TAC RWY 19	N/A			820 - 1 $\frac{7}{8}$ 748 (800 - 1 $\frac{7}{8}$)	
Circling	N/A		1 560 - 3 1 467(1 500-3)	2 260 - 3 2 167(2 200-3)	

MISSED APPROACH

Climb HDG 190° to SOL 2 DME and climbing left turn HDG 030° to cross RDL 090 SOL at 4 000 ft, then RDL 070 SOL to DRACO and hold, continue climb-in-holding to FL 180.

Change : New procedure.

INTENTIONALLY

LEFT

BLANK

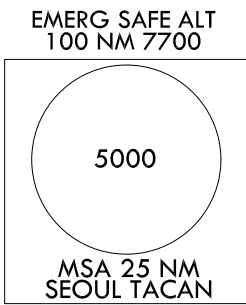
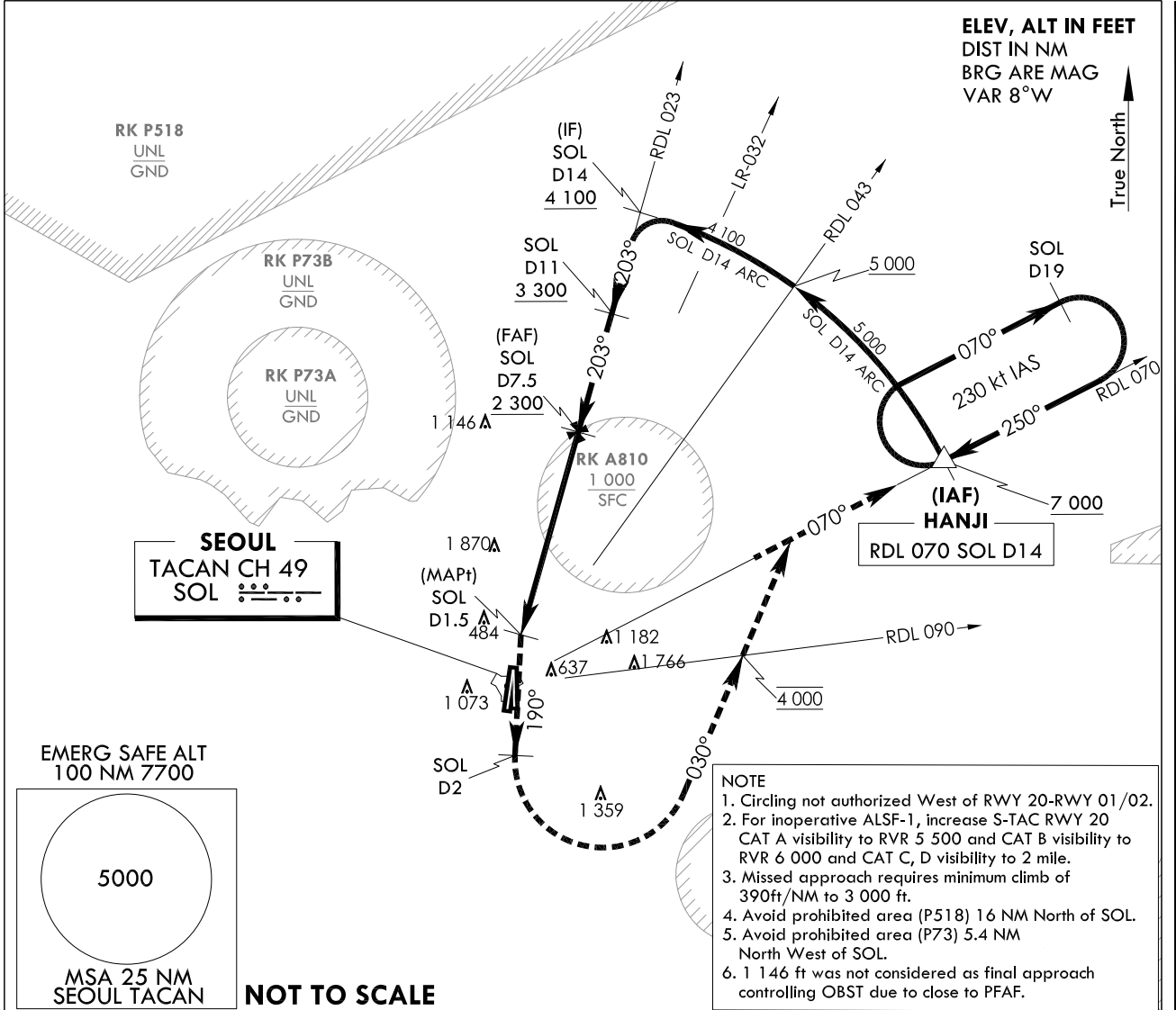
**INSTRUMENT
APPROACH
CHART**

AERODROME ELEV 93 ft
HEIGHTS RELATED TO
THR RWY 20 - ELEV 68 ft
HIGHEST ELEV TDZ 69 ft

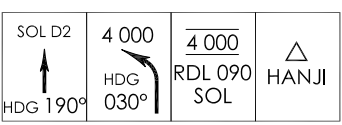
SEOUL APP 123.8 363.8
SEOUL TWR 126.2
234.5 236.6

**SEOUL/Seoul(RKSM)
TACAN
RWY 20**

Note : Approach and Circle to land under U.S. TERPS.

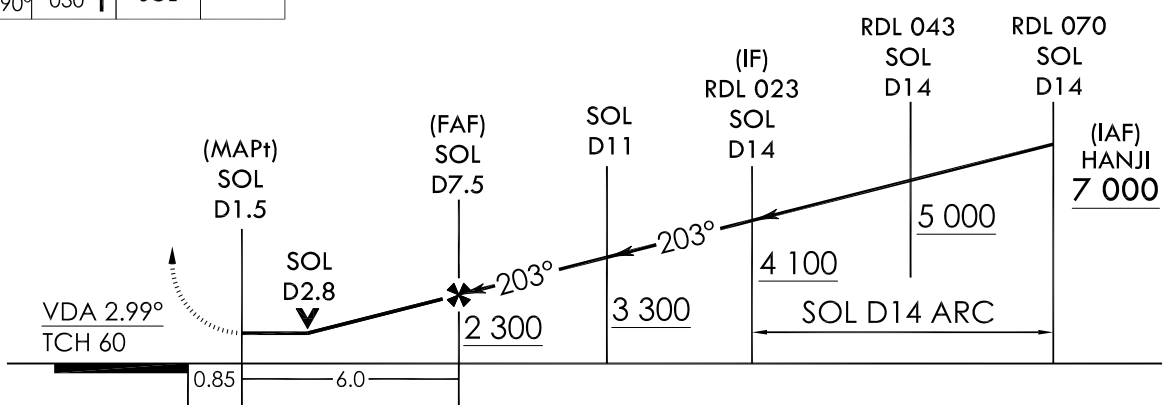


TRANSITION ALT 14 000
TRANSITION LVL FL 140



Missed Approach Climb Rate table

KNOTS	60	120	180	240	300	TO
V/V(fpm)	390	770	1 150	1 530	1 910	3 000



CATEGORY	A	B	C	D	E
S-TAC RWY 20	820 / 35 751 (800 - 3/8)	820 / 40 751 (800 - 3/4)	820 - 1 3/4 751 (800 - 1 3/4)		N/A
Circling	1 020 - 1 1/4 927 (1 000 - 1 1/4)		1 560 - 3 1 467 (1 500 - 3)	2 260 - 3 2 167 (2 200 - 3)	N/A

MISSED APPROACH
Climb HDG 190° to SOL 2DME and climbing left turn HDG 030° to cross RDL 090 SOL at 4 000 ft, then RDL 070 SOL to HANJI and hold, continue climb-in-holding to 7 000 ft.

Change : Information of procedure.

INTENTIONALLY

LEFT

BLANK

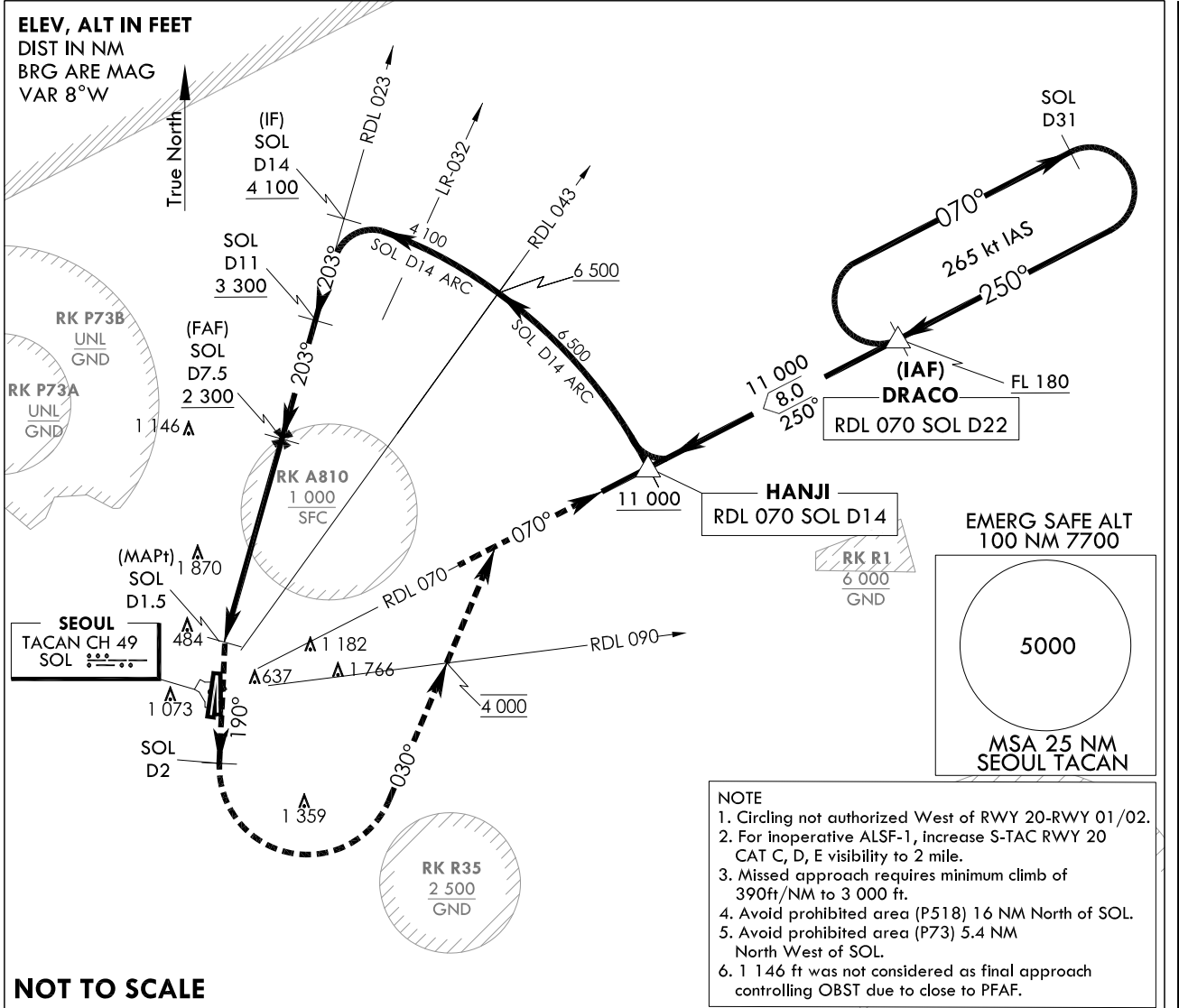
**INSTRUMENT
APPROACH
CHART**

AERODROME ELEV 93 ft
HEIGHTS RELATED TO
THR RWY 20 - ELEV 68 ft
HIGHEST ELEV TDZ 69 ft

SEOUL APP 123.8 363.8
SEOUL TWR 126.2
234.5 236.6

SEOUL/Seoul(RKSM)
HI-TACAN
RWY 20

Note : Approach and Circle to land under U.S. TERPS.



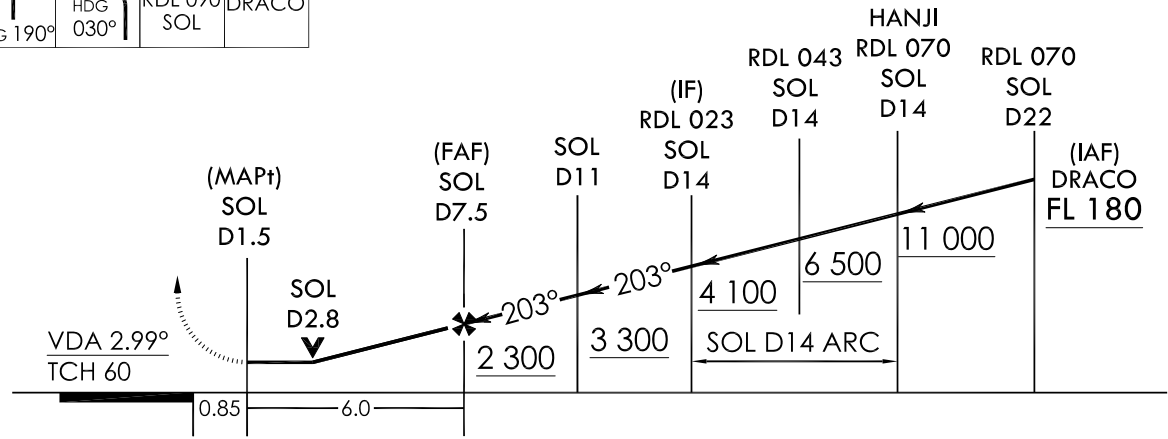
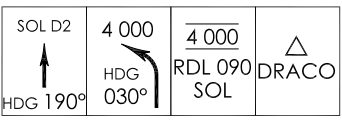
NOT TO SCALE

- NOTE**
1. Circling not authorized West of RWY 20-RWY 01/02.
 2. For inoperative ALSF-1, increase S-TAC RWY 20 CAT C, D, E visibility to 2 mile.
 3. Missed approach requires minimum climb of 390ft/NM to 3 000 ft.
 4. Avoid prohibited area (P518) 16 NM North of SOL.
 5. Avoid prohibited area (P73) 5.4 NM North West of SOL.
 6. 1 146 ft was not considered as final approach controlling OBST due to close to PFAF.

TRANSITION ALT 14 000
TRANSITION LVL FL 140

Missed Approach Climb Rate table

KNOTS	60	120	180	240	300	TO
V/V(fpm)	390	770	1 150	1 530	1 910	3 000



CATEGORY	A	B	C	D	E
S-TAC RWY 20	N/A			820 - 1 3/4 751 (800 - 1 3/4)	
Circling	N/A		1 560 - 3 1 467(1 500-3)	2 260 - 3 2 167(2 200-3)	

MISSED APPROACH
Climb HDG 190° to SOL 2DME and climbing left turn HDG 030° to cross RDL 090 SOL at 4 000 ft, then RDL 070 SOL to DRACO and hold, continue climb-in-holding to FL 180.

Change : Information of procedure.

INTENTIONALLY

LEFT

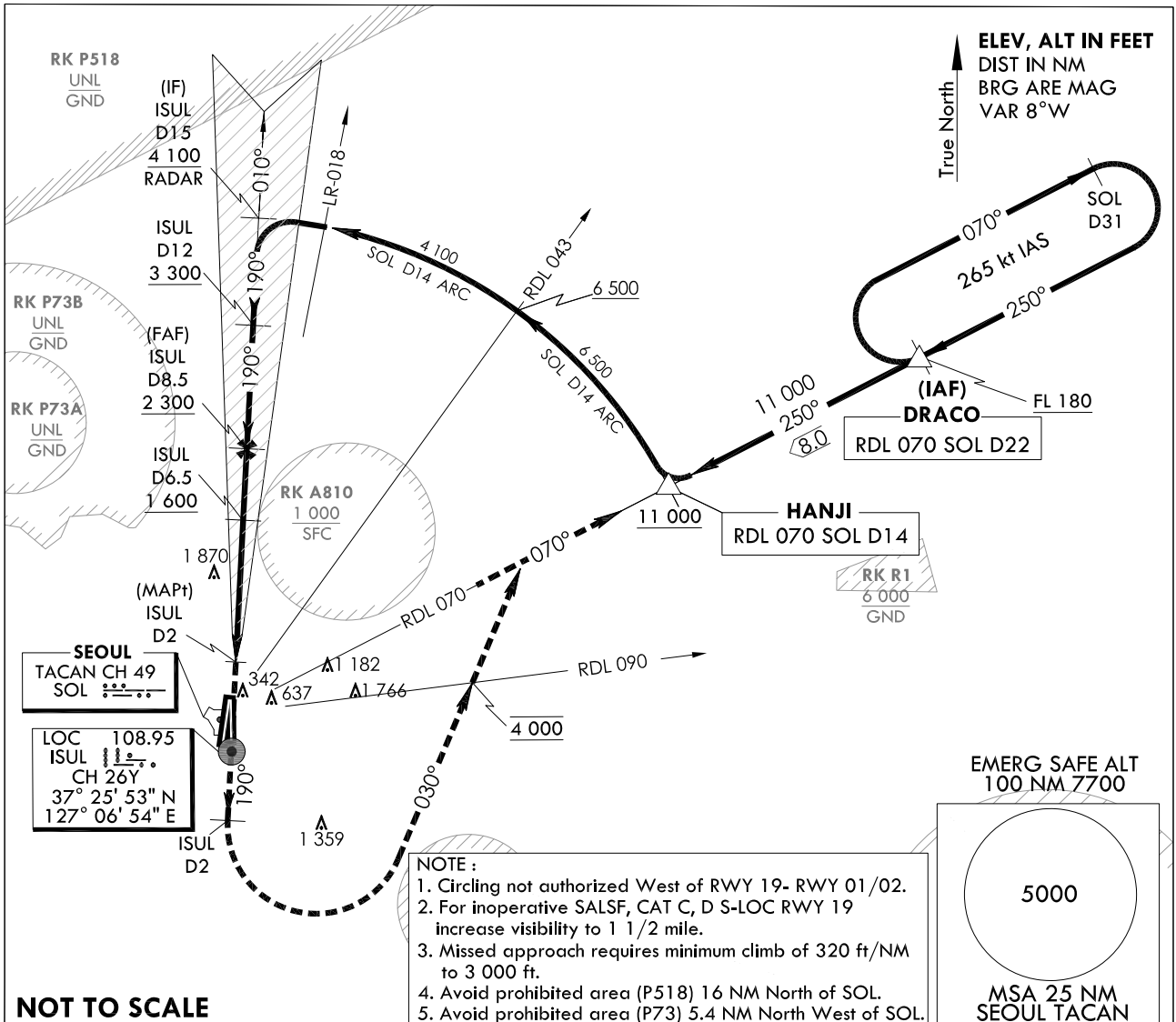
BLANK

**INSTRUMENT
APPROACH
CHART**

AERODROME ELEV 93 ft
HEIGHTS RELATED TO
THR RWY 19 - ELEV 68 ft

SEOUL APP 123.8 363.8
SEOUL TWR 126.2
234.5 236.6

SEOUL/Seoul(RKSM)
HI-LOC/DME
RWY 19

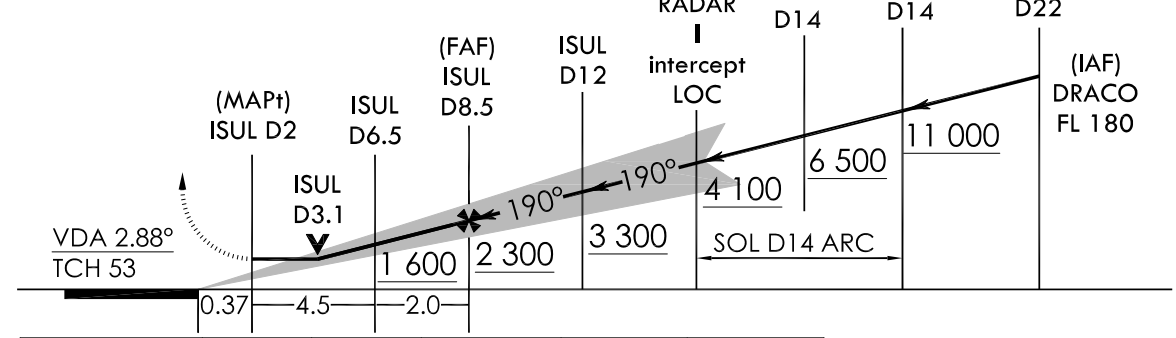
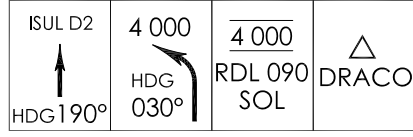


NOT TO SCALE

TRANSITION ALT 14 000
TRANSITION LVL FL 140

Missed Approach Climb Rate table

KNOTS	60	120	180	240	300	TO
V/V(fpm)	320	640	960	1 280	1 590	3 000



CATEGORY	A	B	C	D	E
S-LOC RWY 19	N/A		600 - 1 1/4	528 (600 - 1 1/4)	
Circling	N/A		1 560 - 3 1 467(1 500-3)	2 260 - 3 2 167(2 200-3)	

MISSED APPROACH
Climb HDG 190° to ISUL 2 DME and climbing left turn HDG 030° to cross RDL 090 SOL TACAN at 4 000 ft, then RDL 070 SOL to DRACO and hold, continue climb-in-holding to FL 180.

Change : Amended phrases.

INTENTIONALLY

LEFT

BLANK

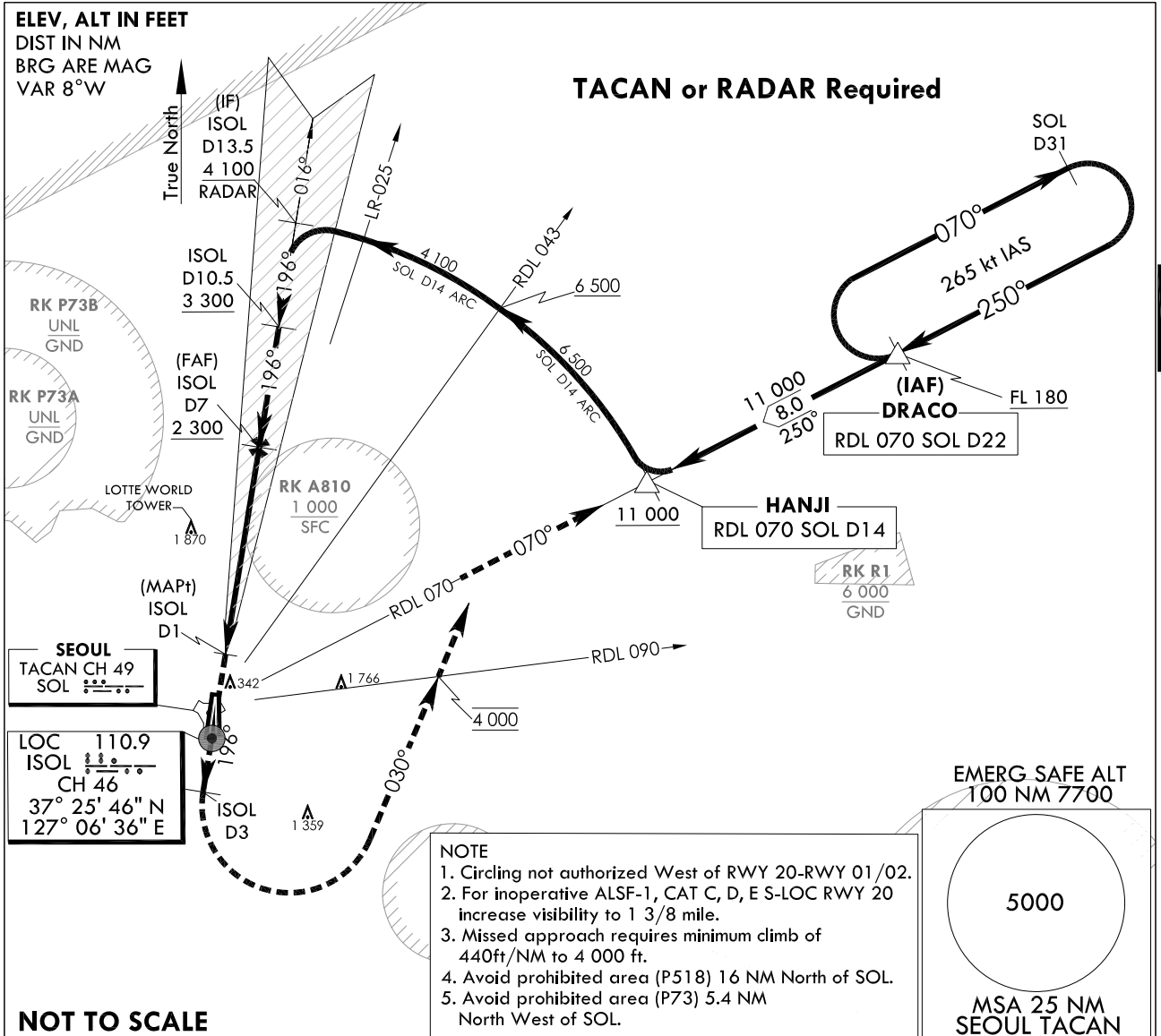
**INSTRUMENT
APPROACH
CHART**

AERODROME ELEV 93 ft
HEIGHTS RELATED TO
THR RWY 20 - ELEV 68 ft
HIGHEST ELEV TDZ 69 ft

SEOUL APP 123.8 363.8
SEOUL TWR 126.2
234.5 236.6

SEOUL/Seoul(RKSM)
HI-LOC/DME
RWY 20

Note : Approach and Circle to land under U.S. TERPS.

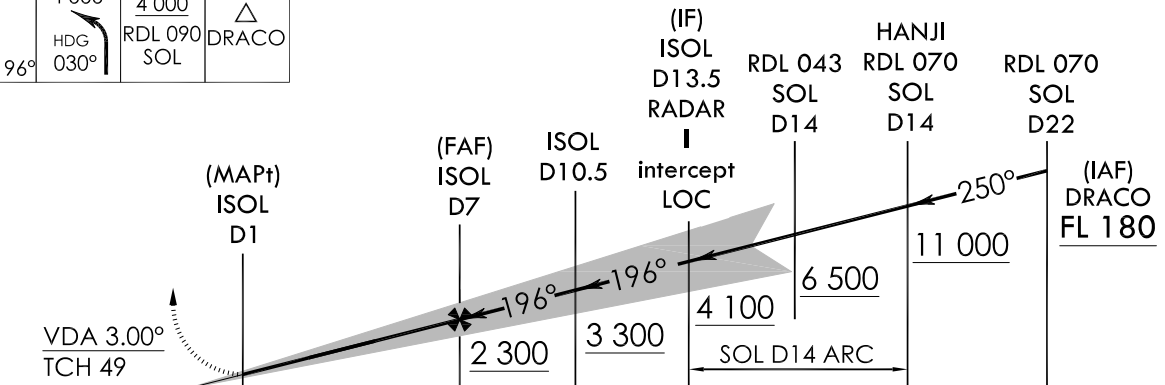
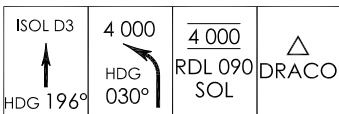


NOT TO SCALE

TRANSITION ALT 14 000
TRANSITION LVL FL 140

Missed Approach Climb Rate table

KNOTS	60	120	180	240	300	TO
V/V(fpm)	440	880	1 320	1 760	2 200	4 000



NOTE : VGSI and LOC decent angle not coincident : (VGSI Angle 3.00° / TCH 61).

CATEGORY	A	B	C	D	E
S-LOC RWY 20	N/A			520/45 451 (500 - 7/8)	
Circling	N/A		1 560 - 3 1 467(1 500-3)	2 260 - 3 2 167(2 200-3)	

MISSED APPROACH
Climb HDG 196° to ISOL 3DME and climbing left turn HDG 030° to cross RDL 090 SOL at 4 000 ft, then RDL 070 SOL to DRACO and hold, continue climb-in-holding to FL 180.

Change : Information of bearing(197°→196°) and altitude(5 000→6 500).

INTENTIONALLY

LEFT

BLANK

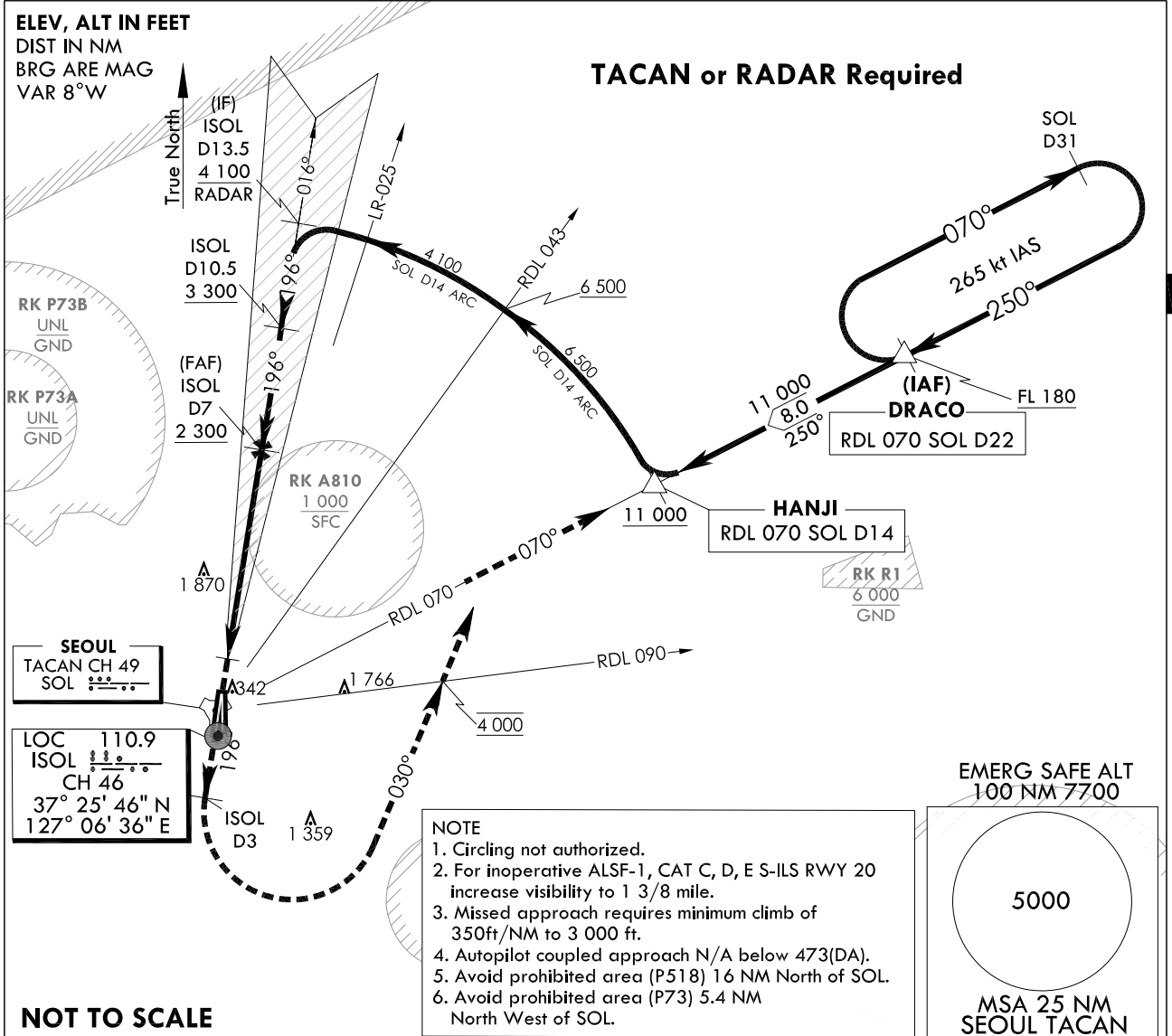
**INSTRUMENT
APPROACH
CHART**

AERODROME ELEV 93 ft
HEIGHTS RELATED TO
THR RWY 20 - ELEV 68 ft
HIGHEST ELEV TDZ 69 ft

SEOUL APP 123.8 363.8
SEOUL TWR 126.2
234.5 236.6

SEOUL/Seoul(RKSM)
HI-ILS
RWY 20

Note : Approach and Circle to land under U.S. TERPS.

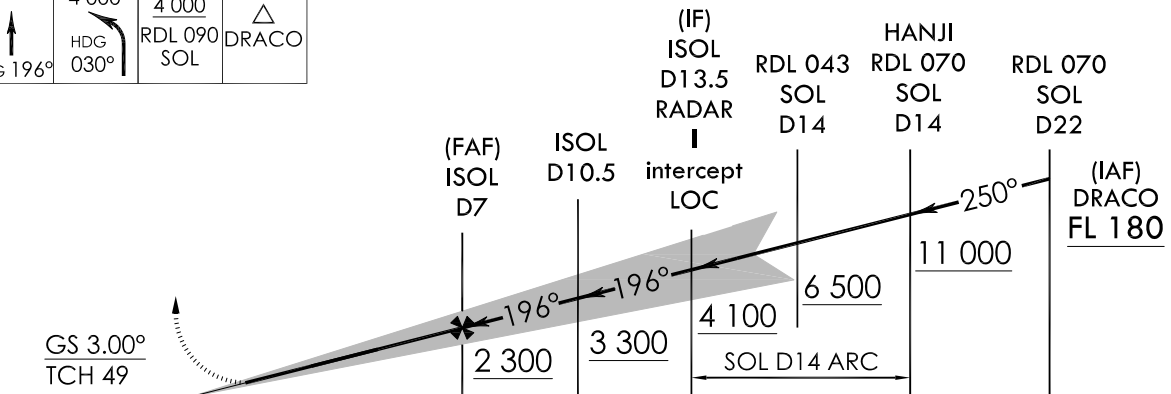
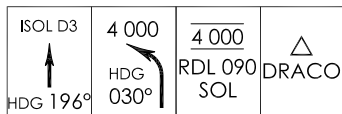


NOT TO SCALE

TRANSITION ALT 14 000
TRANSITION LVL FL 140

Missed Approach Climb Rate table

KNOTS	60	120	180	240	300	TO
V/V(fpm)	350	700	1 050	1 400	1 750	3 000



CATEGORY	A	B	C	D	E
S-ILS RWY 20	N/A			473/45 404 (400 - 7/8)	

MISSED APPROACH
Climb HDG 196° to ISOL 3DME and climbing left turn HDG 030° to cross RDL 090 SOL at 4 000 ft, then RDL 070 SOL to DRACO and hold, continue climb-in-holding to FL 180.

Change : Information of bearing(197°→196°) and altitude(5 000→6 500).

INTENTIONALLY

LEFT

BLANK